



Trade your Expectation for Appreciation and the World changes Instantly

Hospital Furniture



A One Hospicare:-

With over **40 years** of expertise, A One Hospicare is your trusted partner in quality **hospital furniture and surgical solutions**. From clinics to large healthcare facilities, we deliver innovation, durability, and excellence to meet the evolving needs of the medical industry.

A ONE HOSPICARE



About us

Welcome to A One Hospicare, a trusted name in the healthcare industry with a legacy of excellence spanning decades. As a proud sister branch of **Lucky Surgical**—a renowned firm with over 40 years of experience—**A One Hospicare** continues to uphold the highest standards of quality and service. Established 25 years ago, our firm has grown into a leading **manufacturer of hospital furniture and a prominent wholesaler and dealer of surgical goods**.

We specialize in crafting a wide range of hospital furniture, including **patient beds, examination tables, trolleys, and other essential medical equipment**, all designed to meet the diverse needs of healthcare facilities. Our products are proudly **Made in India**, reflecting our commitment to innovation, durability, and supporting local craftsmanship.

Under the dedicated leadership of **Mufaddal and Huzefa**, we have built a reputation for reliability and excellence, serving clinics, hospitals, and medical institutions across the country. At A One Hospicare, our mission is to enhance healthcare infrastructure with products that combine functionality, quality, and affordability.

[CHAT](#)

CERTIFICATES

Certificate of Registration

This is to certify that Occupational Health and Safety Management System of

A ONE HOSPICARE

353/1/1, Patwari Halka No. 52, Palda, Indore-452001, Madhya Pradesh, India

is in accordance with the requirements of the following standard

ISO 45001:2018
(Occupational Health and Safety Management System)

SCOPE

MANUFACTURING OF HOSPITAL FURNITURE AND TRADING OF MEDICAL EQUIPMENTS

Certificate Number : 19102209195

Initial Registration Date : 19-Oct-2022
1st Surveillance Date : 19-Sep-2023
2nd Surveillance Date : 19-Sep-2024
Certificate Expiry Date : 09-Oct-2025

To verify certificate, visit at :
www.arscert.com
https://www.arscert.com/registration
https://www.lafcertssearch.org/

Issued by ARS Assessment Private Limited

Managing Director

UAF IAF

UAF Address : 100 North Center Dr. STE 202, Norfolk, VA 23502, United States of America

Certificate of Registration

This is to certify that Environmental Management System of

A ONE HOSPICARE

353/1/1, Patwari Halka No. 52, Palda, Indore-452001, Madhya Pradesh, India

is in accordance with the requirements of the following standard

ISO 14001:2015
(Environmental Management System)

SCOPE

MANUFACTURING OF HOSPITAL FURNITURE AND TRADING OF MEDICAL EQUIPMENTS

Certificate Number : 19102209194

Initial Registration Date : 19-Oct-2022
1st Surveillance Date : 19-Sep-2023
2nd Surveillance Date : 19-Sep-2024
Certificate Expiry Date : 09-Oct-2025

To verify certificate, visit at :
www.arscert.com
https://www.arscert.com/registration
https://www.lafcertssearch.org/

Issued by ARS Assessment Private Limited

Managing Director

UAF IAF

UAF Address : 100 North Center Dr. STE 202, Norfolk, VA 23502, United States of America

Certificate of Compliance

We hereby declare that the technical EEs of product class 1 complied with the requirement of Medical Device Directive 93/42/EEC.

Manufacturer

A ONE HOSPICARE

Address : 353/1/1, Patwari Halka No. 52, Palda, Indore, India

Product : HOSPITAL FURNITURE AND TRADING OF MEDICAL EQUIPMENTS

The Certification body has performed an audit of the above product quality system covering the design, manufacturing and final inspection of the certified product. The quality system has been assessed, approved and is subject to continuous surveillance according to Medical Device Directive 93/42/EEC.

This certificate is issued under the following conditions:

- It applies only to the quality system registered in the manufacturer of above referenced model and it does not substitute the design or type-examination procedure, if required.
- The certificate remains valid until the manufacturing conditions or the quality system are changed.
- The certificate validity is conditioned by positive results of surveillance audits.
- After failing the annual surveillance audits, the manufacturer shall file a corrective action of the referenced model.
- The CE mark as shown above can be used, under the responsibility of the manufacturer, after completion of CE Declaration of conformity and compliance with all relevant CE Directives. The compliance is based on a single evaluation of a sample of above mentioned product. It does not imply an assessment of the production.

Date of Registration: 06/10/2022 2nd Surveillance Due: 05/10/2024
1st Surveillance Due: 05/10/2023 Recertification Due: 05/10/2025

CERTIFICATE No: CE-DGN-2210062

To Verify this certificate please visit at www.arscert.com

CE

Authorised Signatory

Address : 106 Cuney Road, Manchester M20 6ZA, UK. E-mail: info@arscert.com

This certificate remains the property of Arcade management certification and shall be returned immediately on request. Validity of this certificate is subject to annual surveillance audits to be done successfully or on before due date of audit (in case if surveillance audit is not conducted, this certificate shall be suspended/withdrawn)

Certificate of Registration

This is to certify that Medical Devices Quality Management System of

A ONE HOSPICARE

353/1/1, Patwari Halka No. 52, Palda, Indore-452001, Madhya Pradesh, India

is in accordance with the requirements of the following standard

ISO 13485:2016
(Medical Devices – Quality Management System)

SCOPE

MANUFACTURING OF HOSPITAL FURNITURE AND TRADING OF MEDICAL EQUIPMENTS

Certificate Number : 19102208195

Initial Registration Date : 19-Oct-2022
1st Surveillance Date : 19-Sep-2023
2nd Surveillance Date : 19-Sep-2024
Certificate Expiry Date : 09-Oct-2025

To verify certificate, visit at :
www.arscert.com
https://www.arscert.com/registration
https://www.lafcertssearch.org/

Issued by ARS Assessment Private Limited

Managing Director

UAF IAF

UAF Address : 100 North Center Dr. STE 202, Norfolk, VA 23502, United States of America

Certificate of Compliance

A ONE HOSPICARE

Address

OFFICE: 353/1/1, Patwari Halka No. 52, Palda, Indore, India

Product

MANUFACTURER & SUPPLIER OF HOSPITAL FURNITURE & MODULAR FURNITURE

Has been assessed and registered as meeting the requirements of Compliance of sustainability standard

ANSI/ISO 26001:2017

Date of Registration: 06/10/2022 2nd Surveillance Due: 05/10/2024
1st Surveillance Due: 05/10/2023 Recertification Due: 05/10/2025

CERTIFICATE No: 2210695810

To Verify this certificate please visit at www.mapcert.de

Authorised Signatory

Mapple Certification Services

Validity of this certificate is subject to annual surveillance audits done successfully

This Certificate of Registration remains the Property of Mapple Certification services and shall be returned immediately upon request

Email: info@mapcert.de Website: www.mapcert.de
Center: 4, 50931 Berlin, Germany

Certificate of Compliance

RoHS Directive (2011/65/EU) of the European Parliament and of the Council on the restriction of use of certain hazardous substances in Electrical and Electronic Equipment.

Manufacturer

A ONE HOSPICARE

Address : 353/1/1, Patwari Halka No. 52, Palda, Indore, India

Product : HOSPITAL FURNITURE AND MEDICAL EQUIPMENTS

This is to state that the above mentioned product is in compliance with RoHS Directive (2011/65/EU) of the European Parliament and Commission Decision (2005/618/EC) on the restriction of use of certain Hazardous Substances (Lead (Pb), Mercury (Hg), Cadmium (Cd), Hexavalent Chromium (Cr(VI)), Polychlorinated Biphenyls (PCBs), Polychlorinated Diphenyl ethers (PCDEs) in Electrical and Electronic Equipments.

Statement:

This certificate declares that the product type / model described above complies with the mentioned above European Standard(s).

Remarks:

This certificate of compliance is based on the evaluation of a sample of the above mentioned products. If this certificate in connection with the test report. The certification body should be informed (revision of technical file) for any modification or alterations made to the aforementioned product type(s), including design and manufacture and for extension to the existing scope of application.

Date of Registration: 06/10/2022 2nd Surveillance Due: 05/10/2024
1st Surveillance Due: 05/10/2023 Recertification Due: 05/10/2025

CERTIFICATE No: ROH-AHB-2210061

To Verify this certificate please visit at www.arscert.com

RoHS compliant

Authorised Signatory

Address : 106 Cuney Road, Manchester M20 6ZA, UK. E-mail: info@arscert.com

This certificate remains the property of Arcade management certification and shall be returned immediately on request. Validity of this certificate is subject to annual surveillance audits to be done successfully or on before due date of audit (in case if surveillance audit is not conducted, this certificate shall be suspended/withdrawn)

Certificate of Registration

This is to certify that The Quality Management System of

A ONE HOSPICARE

353/1/1, PATWARI HALKA NO. 52, PALDA, INDORE – 452001 M.P. INDIA

Has been assessed and found to conform to the requirements of

ISO 9001 : 2015
for the following scope

MANUFACTURING OF ALL TYPES OF HOSPITAL FURNITURE, TRADING OF HOSPITAL EQUIPMENT AND SURGICAL ITEMS.

CERTIFICATE NUMBER : 24QM565154

ISSUE DATE : 04/03/2024

EXPIRY DATE : 03/03/2027

Authorised Signatory

ISO 9001:2015

UK Cert Limited (UK)

1 Jupiter House, Colindale Park, Willesden Green, London NW9 1RN, UK
E-Mail: info@ukcert.com Visit www.ukcert.com
This certificate is the property of UK Cert Limited (UK) and shall be returned immediately on request.
Validity of the certificate is subject to successful completion of surveillance audits on or before due date (in case surveillance audits is not allowed to be conducted, this certificate shall be suspended / cancelled).

AOH 151 (A)

5 FUNCTIONAL ICU BED

ICU PATIENT CARE BED - 5 FUNCTIONAL FEATURES

DURABLE BUILD:
MS PERFORATED TOP WITH A POWDER-COATED FRAME FOR LONG-LASTING USE.

ADVANCED FUNCTIONALITY:
BACKREST ADJUSTMENT: 0° TO 75°
LEG REST ADJUSTMENT: 0° TO 45°
HEIGHT ADJUSTMENT: 500 MM TO 750 MM
TRENDELENBURG & REVERSE TRENDELENBURG

ABS PANELS & SIDE RAILS



Back Rest



Knee Rest



Height



Head Up



Head Low



AOH 151 (B)

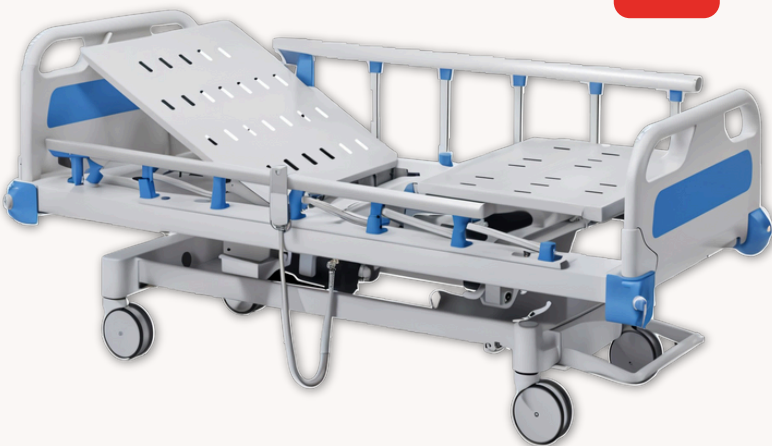
5 FUNCTIONAL ICU BED

ICU PATIENT CARE BED - 5 FUNCTIONAL KEY FEATURES

5 FUNCTIONAL POSITIONS:
BACKREST ADJUSTMENT: 0° TO 75°
LEG REST ADJUSTMENT: 0° TO 45°
HEIGHT ADJUSTMENT: 500 MM TO 750 MM
TRENDELENBURG & REVERSE TRENDELENBURG

DURABLE CONSTRUCTION:
MS PERFORATED THE TOP FOR STRENGTH AND VENTILATION. POWDER-COATED FRAME FOR RUST RESISTANCE AND LONG-LASTING USE.

ABS PANELS & COLLAPSIBLE RAILING:
DETACHABLE ABS HEAD AND FOOT PANELS FOR EASY MAINTENANCE. COLLAPSIBLE SIDE RAILS FOR ENHANCED PATIENT SAFETY.



Back Rest



Knee Rest



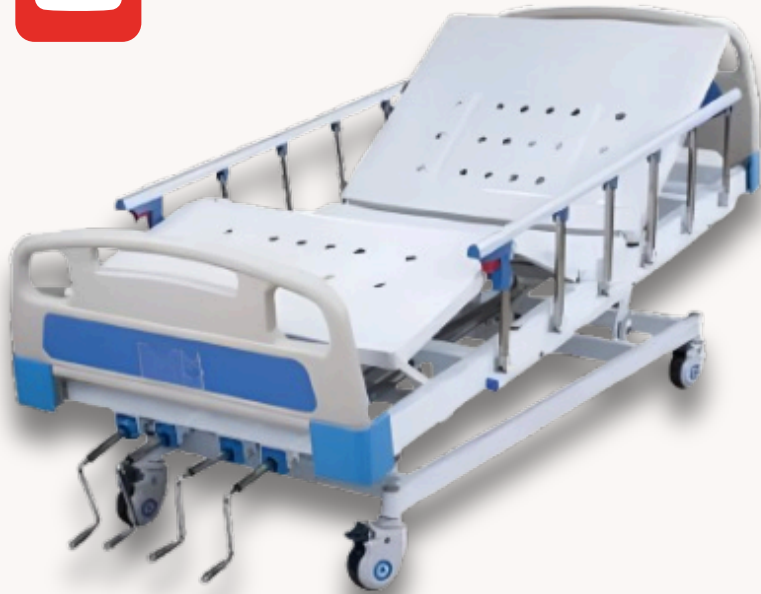
Height



Head Up



Head Low



AOH 152 (A)

5 FUNCTIONAL ICU BED (4 GEAR)

HIGH-LOW 4 FUNCTIONAL MANUAL BED

THIS MANUAL BED IS DESIGNED FOR PATIENT COMFORT AND CAREGIVER EASE, FEATURING 4 FUNCTIONAL ADJUSTMENTS OPERATED SMOOTHLY THROUGH 4 GEARS. THE HIGH-LOW ADJUSTMENT TRENDULBRUG AND REVERSE TRENDULBRUG AND DURABLE MS FRAME WITH A POWDER-COATED FINISH ENSURE RELIABILITY AND LONG-LASTING PERFORMANCE.

EQUIPPED WITH DETACHABLE ABS PANELS, COLLAPSIBLE SIDE RAILS FOR SAFETY, AND WHEELS FOR MOBILITY, THIS BED PROVIDES BOTH CONVENIENCE AND STABILITY.

AOH 152 (B)

5 FUNCTIONAL ICU BED (4 GEAR)

HIGH-LOW 4 FUNCTIONAL MANUAL BED

THIS MANUAL BED IS DESIGNED FOR PATIENT COMFORT AND CAREGIVER EASE, FEATURING 4 FUNCTIONAL ADJUSTMENTS OPERATED SMOOTHLY THROUGH 4 GEARS. THE HIGH-LOW ADJUSTMENT TRENDULBRUG AND REVERSE TRENDULBRUG AND DURABLE MS FRAME WITH A POWDER-COATED FINISH ENSURE RELIABILITY AND LONG-LASTING PERFORMANCE.

EQUIPPED WITH SS NOVA PANELS, COLLAPSIBLE SIDE RAILS FOR SAFETY, AND WHEELS FOR MOBILITY, THIS BED PROVIDES BOTH CONVENIENCE AND STABILITY.



AOH 153 (A)

3 FUNCTIONAL ICU BED

3-FUNCTION MANUAL BED

THE MANUAL BED OFFERS BACKREST ELEVATION, KNEE REST ELEVATION, AND HIGH/LOW ADJUSTMENT THROUGH MECHANICAL LEVERS. ITS STURDY MS FRAME AND PERFORATED CRCA SHEET TOP ENSURE RELIABILITY AND COMFORT.

WITH ALUMINUM SIDE RAILINGS, ABS PANELS, AND ABS WHEELS WITH BRAKES, THIS BED IS A PRACTICAL AND DURABLE SOLUTION FOR HOSPITALS AND HOME CARE.



Back Rest



Knee Rest



Height

AOH 153(B)

3 FUNCTIONAL ICU BED

3-FUNCTION ELECTRIC BED

THIS ELECTRIC BED PROVIDES 3 ESSENTIAL FUNCTIONS: HEAD-END ELEVATION, FOOT-END ELEVATION, AND HEIGHT ADJUSTMENT, OPERATED WITH A REMOTE. MADE WITH A DURABLE MS TUBULAR FRAME, IT ENSURES STRENGTH AND COMFORT.

EQUIPPED WITH ABS HEAD AND FOOT PANELS, ALUMINUM SIDE RAILINGS, AND ABS WHEELS WITH BRAKES, THIS BED COMBINES FUNCTIONALITY AND SAFETY, MAKING IT IDEAL FOR PATIENT CARE.



Back Rest



Knee Rest



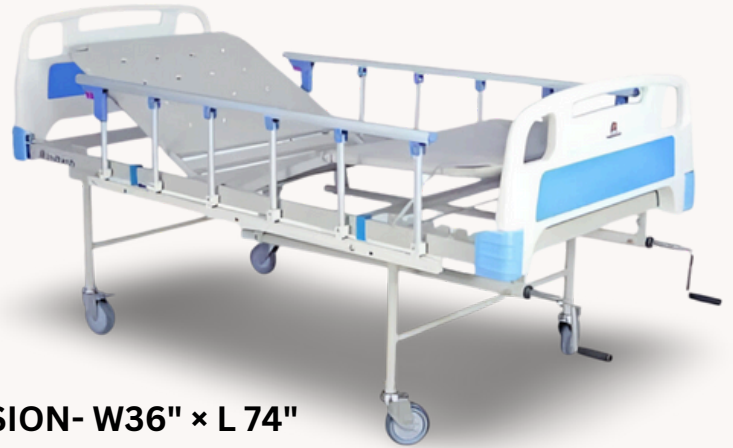
Height

AOH 154 (A)

**FWLER
BED**

FWLER BED - MANUAL

A DURABLE MANUAL FWLER BED WITH HEAD AND KNEE REST ADJUSTMENTS, ABS PANELS, COLLAPSIBLE RAILINGS, AND IMPORTED WHEELS FOR SAFETY AND MOBILITY.



DIMENSION- W36" × L 74"

AOH 154 (B)

**FWLER
BED**

FWLER BED - MANUAL

A DURABLE MANUAL FWLER BED WITH HEAD AND KNEE REST ADJUSTMENTS, MS NOVA PANELS, DETACHABLE RAILINGS, AND IMPORTED WHEELS FOR SAFETY AND MOBILITY.



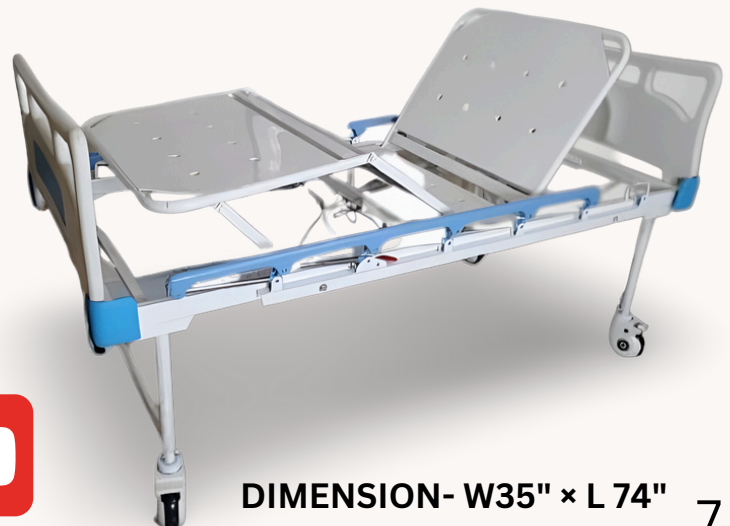
DIMENSION- W35" × L 74"

AOH 154 (C)

**FWLER
BED**

FWLER BED - ELECTRIC

A DURABLE ELECTRIC FWLER BED WITH HEAD AND KNEE REST ADJUSTMENTS, ABS PANELS, COLLAPSIBLE RAILINGS, AND IMPORTED WHEELS FOR SAFETY AND MOBILITY.



DIMENSION- W35" × L 74"

AOH 154 (D)

FWLER BED

FWLER BED - MANUAL

A DURABLE MANUAL FWLER BED WITH HEAD AND KNEE REST ADJUSTMENTS, INDIAN PANELS, AND IMPORTED WHEELS FOR SAFETY AND MOBILITY.



DIMENSION- W35" × L 72"

AOH 155 (A)

SEMI FWLER BED

SEMI FWLER BED - MANUAL

MANUAL SEMI FWLER BED WITH HEADREST ADJUSTMENT, STURDY MS POWDER-COATED FRAME, AND ABS PANELS FOR DURABILITY AND EASY CARE.



DIMENSION- W35" × L 72"

AOH 155 (B)

SEMI FWLER BED

SEMI FWLER BED - MANUAL

MANUAL SEMI FWLER BED WITH HEADREST ADJUSTMENT, STURDY MS POWDER-COATED FRAME, AND SS NOVA PANELS FOR DURABILITY AND EASY CARE.



DIMENSION- W35" × L 72"

AOH 155 (C)

SEMI FOWLER BED

SEMI FOWLER ELECTRIC BED

HAS AN MS POWDER-COATED FRAME, ABS PANELS, COLLAPSIBLE RAILINGS, AND 4-INCH WHEELS FOR EASY MOBILITY AND PATIENT SAFETY.



DIMENSION- W35" × L 72"



AOH 155 (D)

SEMI FOWLER BED

SEMI FOWLER BED - MANUAL

MANUAL SEMI FOWLER BED WITH HEADREST ADJUSTMENT, STURDY MS POWDER-COATED FRAME, INDIAN PANELS. REGULAR MODEL



DIMENSION- W35" × L 72"

AOH 155 (E)

SS SEMI FOWLER BED

SEMI FOWLER BED - MANUAL

MANUAL SEMI FOWLER BED WITH HEADREST ADJUSTMENT, STURDY FULL SS FRAME, INDIAN SS PANELS AND SS RAILINGS. DELUX MODEL



DIMENSION- W35" × L 72"

AOH 155 (F)

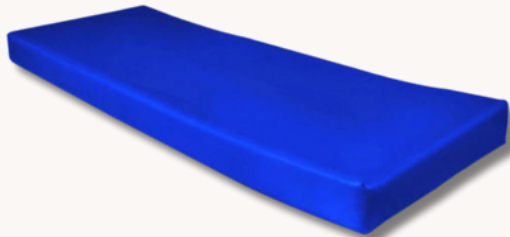
SEMI FOWLER BED

THE PATIENT CARE SEMI FOWLER BED WITH COMMODE FEATURES A DURABLE MS POWDER-COATED FRAME, REGULAR MODEL DESIGN, AND SIDE RAILINGS. ITS DIMENSIONS ARE W 35" X L 72", AND IT INCLUDES A 3" MATTRESS FOR ADDED COMFORT.



AOH 156 (A)

PLAIN BED MATTRESS



**3" EP PROFILE
3" EP + 1" PU FOAM
4" PU FOAM 32 DENSITY**

AOH 156 (B)

SEMI FOWLER BED MATTRESS

**3" EP PROFILE
3" EP + 1" PU FOAM
4" PU FOAM 32 DENSITY**



AOH 156 (C)

FOWLER BED MATTRESS



**3" EP PROFILE
3" EP + 1" PU FOAM
4" PU FOAM 32 DENSITY**

AOH 157 (A)

PLAIN BED

THE WARD CARE PLAIN BED

FEATURES A HEAVY-DUTY MS POWDER-COATED BODY WITH ABS PANELS, ENSURING DURABILITY AND RELIABILITY FOR HOSPITAL USE.



DIMENSION- W35" × L 72"

AOH 157 (B)

PLAIN BED

THE WARD CARE PLAIN BED

FEATURES A HEAVY-DUTY MS POWDER-COATED BODY WITH INDIAN MS POWDER-COATED PANELS, ENSURING DURABILITY AND RELIABILITY FOR HOSPITAL USE.



DIMENSION- W35" × L 72"

AOH 157 (C)

ATTENDANT BED

THE ATTENDANT BED

FEATURES A STURDY MS POWDER-COATED BODY AND INCLUDES A COMFORTABLE MATTRESS, ENSURING DURABILITY AND CONVENIENCE.



DIMENSION- W24" × L 60" 11

AOH 157 (D)

CUSTOMISABLE BEDS

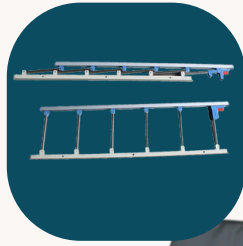
**INDIAN
RAILINGS**



**ABS
RAILINGS**



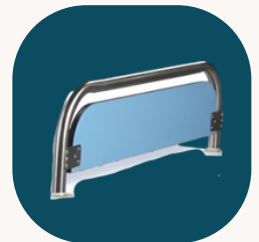
**Collapsible
RAILINGS**



**INDIAN
PANELS**



**ABS
PANELS**



**SS NOVA
PANELS**

Dimensions- 20" × 30"

AOH 158 (A)

DELIVERY BED



MOTORIZED DELIVERY BED:
ELECTRICALLY OPERATED WITH
REMOTE/BUTTON CONTROLS FOR
PRECISE ADJUSTMENTS (HEIGHT,
BACKREST, LEG REST).
PRIORITIZES AUTOMATION,
COMFORT, AND EASE OF USE IN
MODERN HEALTHCARE SETTINGS,
REDUCING STAFF EFFORT AND
ENHANCING SAFETY WITH
FEATURES LIKE BATTERY
BACKUPS.**

AOH 158 (B)

DELIVERY BED

**MOTORIZED DELIVERY BED:
ELECTRICALLY OPERATED WITH
REMOTEDRAULIC DELIVERY BED
MANUAL OR FOOT-PEDAL
HYDRAULIC SYSTEM FOR
ADJUSTMENTS, OFFERING
RELIABILITY AND LOW
MAINTENANCE. COST-EFFECTIVE
AND IDEAL FOR AREAS WITH
LIMITED ELECTRICAL ACCESS,
REQUIRING MODERATE PHYSICAL
EFFORT BUT ENSURING STABLE
SUPPORT DURING PROCEDURES.**



AOH 159 (A)

**TELESCOPIC
TABLE**



DELIVERY TABLE TELESCOPIC

SIZE: 182L X 68W X 60-80H CM

**TUBULAR FRAME WITH SWIVELING CASTORS AND
EPOXY POWDER COATING
3-SECTION STAINLESS STEEL TOP**

ADJUSTABLE BACKREST POSITIONS

**SLIDING LEG-END SECTION, FOAM-PADDED KNEE
CRUTCHES**

**SAFETY SIDE RAILING (3 SIDES), SS WASTE BOWL,
AND IV ROD INCLUDED**

AOH 159 (B)

**TELESCOPIC
TABLE**

**DELIVERY TABLE TELESCOPIC (FIXED
HEIGHT)**

SIZE: 182L X 68W X 76H CM

**SS TUBE FRAME WITH
3-SECTION STAINLESS STEEL TOP**

ADJUSTABLE BACKREST

**SLIDING LEG-END SECTION, FOAM-PADDED
KNEE CRUTCHES**

**SAFETY SIDE RAILING (3 SIDES), SS WASTE
BOWL, AND IV ROD INCLUDED**



AOH 160 (A)

GYNAE LABOUR TABLE

PATIENT GYNAE LABOUR TABLE

**(3-FOLDABLE, POWDER-COATED)
THIS VERSATILE LABOUR TABLE FEATURES A
STURDY POWDER-COATED FRAME AND A 3-
FOLD WITH IV ROD AND BELT. WITH DIMENSIONS
OF 22" WIDTH X 72" LENGTH.**



AOH 160 (B)

GYNAE LABOUR TABLE

PATIENT GYNAE LABOUR TABLE

**THIS GYNAECOLOGICAL LABOR TABLE
FEATURES A DURABLE POWDER-COATED
FRAME WITH AN ADJUSTABLE BACKREST
FOR PATIENT COMFORT. IT INCLUDES A
BUILT-IN CUTOUT AND LEG STIRRUPS FOR
SUPPORT DURING PROCEDURES. WITH
DIMENSIONS OF 22" WIDTH X 72" LENGTH.**



AOH 160 (C)

GYNAE LABOUR TABLE

PATIENT GYNAEC LABOUR TABLE (POWDER- COATED, COMPACT DESIGN)

**THIS COMPACT GYNAECOLOGICAL LABOR
TABLE IS DESIGNED FOR EFFICIENCY AND
DURABILITY, FEATURING A STURDY POWDER-
COATED FRAME. IT INCLUDES LEG STIRRUPS
AND A BUILT-IN CUTOUT FOR PROCEDURAL
CONVENIENCE. WITH FIXED DIMENSIONS OF
22" WIDTH X 72" LENGTH.**



AOH 160 (D)

GYNAE LABOUR TABLE

DELUXE GYNAE LABOUR TABLE

POWDER-COATED FRAME WITH A 2" CUSHIONED MATTRESS, ADJUSTABLE BACKREST, LEG STIRRUPS, AND STAINLESS STEEL BOWL. DIMENSIONS: 22" × 72"×30". DURABLE AND COMFORTABLE FOR MATERNITY CARE.



AOH 160 (E)

GYNAE LABOUR TABLE

PATIENT GYNAE LABOUR TABLE

(3-FOLDABLE, POWDER-COATED) THIS VERSATILE LABOUR TABLE FEATURES A STURDY POWDER-COATED FRAME AND A 3-FOLD WITH IV ROD AND BELT. WITH DIMENSIONS OF 22" WIDTH × 72" LENGTH × 30" HEIGHT.



AOH 161 (A)

**EXAMINATION
TABLE**

PATIENT EXAMINATION TABLE

**POWDER-COATED FRAME WITH
AN ADJUSTABLE BACKREST FOR
COMFORT AND VERSATILITY.
DIMENSIONS: 22" × 72".
DURABLE AND EASY TO
MAINTAIN, IDEAL FOR MEDICAL
EXAMINATIONS.**



AOH 161 (B)

**EXAMINATION
TABLE**

PATIENT EXAMINATION TABLE

**POWDER-COATED FRAME WITH
A PLAIN TOP FOR STABLE
SUPPORT. DIMENSIONS: 22" ×
72". DURABLE AND EASY TO
MAINTAIN, PERFECT FOR
GENERAL MEDICAL
EXAMINATIONS.**



AOH 162 (A)

EXAMINATION COUCH

EXAMINATION MINI COUCH

POWDER-COATED FRAME WITH AN ADJUSTABLE BACKREST FOR COMFORT AND VERSATILITY. DIMENSIONS: 22" × 72". WITH 2" MATTRESS



AOH 162 (B)

EXAMINATION COUCH

EXAMINATION MINI COUCH

FEATURES A POWDER-COATED FRAME WITH AN ADJUSTABLE BACKREST, 2 DRAWERS, AND A 2" MATTRESS FOR COMFORT. COMPACT MINI COUCH DESIGN WITH DIMENSIONS: W 22" × L 72" × H 30".



AOH 162 (C)

EXAMINATION COUCH

EXAMINATION MINI COUCH

FEATURES A POWDER-COATED FRAME WITH AN ADJUSTABLE BACKREST, 2 DRAWERS, AND A 2" MATTRESS FOR COMFORT. COMPACT MINI COUCH DESIGN WITH DIMENSIONS: W 22" × L 72" × H 30".



AOH 162 (D)

EXAMINATION COUCH

EXAMINATION COUCH

HEAVY-DUTY BODY WITH HEAD UP-DOWN ADJUSTMENT, 3 DRAWERS, 3 CABINET, AND AN INTEGRATED FOOTSTEP. FEATURES A 2" MATTRESS FOR PATIENT COMFORT. DIMENSIONS: W 22" X L 72" X H 30".



AOH 162 (E)

EXAMINATION COUCH

EXAMINATION COUCH WITH GYNAE ATTACHMENT

SIZE: W 22" X L 72" X H 30"
3 DRAWERS, 2 CABINETS, FOOT STIRRUPS
2" MATTRESS, POWDER-COATED FINISH



AOH 162 (F)

EXAMINATION COUCH

EXAMINATION COUCH WITH GYNAE ATTACHMENT

SIZE: W 22" X L 72" X H 30"
3 DRAWERS, 2 CABINETS, FOOT STIRRUPS, INTEGRATED FOOT STEP
2" MATTRESS, POWDER-COATED FINISH



AOH 162 (G)

**EXAMINATION
COUCH**

EXAMINATION MINI PLAIN COUCH

**POWDER COATED FINISH
1 DRAWER, 1 CABINET, WITH
FOOTSTEP DIMENSIONS: W 22" X L
72" X H 30" 2" MATTRESS INCLUDED**



AOH 162 (H)

**EXAMINATION
COUCH**

EXAMINATION MINI PLAIN COUCH

**POWDER COATED FINISH
1 DRAWER, 1 CABINET,
DIMENSIONS: W 22" X L 72" X H 30"
2" MATTRESS INCLUDED**



AOH 162 (I)

**EXAMINATION
COUCH**

EXAMINATION COUCH

**HEAVY-DUTY BODY POWDER
COATED, 3 DRAWERS, 3 CABINET.
FEATURES A 2" MATTRESS FOR
PATIENT COMFORT. DIMENSIONS: W
22" X L 72" X H 30".**



AOH 163 (A)

DERMA CHAIR

REMORTIZED DERMA CHAIR

3/4 MOTOR FUNCTIONS FOR HEIGHT, BACKREST, LEGREST, AND TILT, OPERATED VIA REMOTE CONTROL. FEATURES PREMIUM PU FOAM, HIGH-DENSITY FOAM, OPTIONAL 360° SWIVEL, SUPPORTS UP TO 150 KG.



AOH 163 (B)

DERMA CHAIR

HYDRAULIC DERMA CHAIR

MANUAL HEIGHT ADJUSTMENT, ADJUSTABLE BACKREST AND LEGREST, PREMIUM PU LEATHER UPHOLSTERY, HIGH-DENSITY FOAM, STURDY BASE, 150 KG LOAD CAPACITY.



AOH 163 (C)

DERMA CHAIR

MANUAL DERMA CHAIR

BACKREST AND LEGREST ADJUSTMENT BY HAND LEVER, FIXED HEIGHT, PREMIUM PU LEATHER UPHOLSTERY, HIGH-DENSITY FOAM CUSHIONING, DURABLE FRAME, 150 KG LOAD CAPACITY.



AOH 164 (A)

**BLOOD DONOR
CHAIR**

BLOOD DONOR CHAIR

**MS POWDER-COATED FRAME,
CUSHIONED SEAT, AND
ADJUSTABLE ARMRESTS FOR
DURABILITY AND COMFORT.**



AOH 164 (B)

**BLOOD DONOR
CHAIR**

BLOOD DONOR CHAIR

**MS POWDER-COATED FRAME WITH
CUSHIONED SEAT AND
ADJUSTABLE ARMRESTS,
DESIGNED FOR DURABILITY AND
DONOR COMFORT**



AOH 164 (C)

**BLOOD DONOR
CHAIR**

BLOOD DONOR CHAIR

**MS POWDER-COATED FRAME WITH
CUSHIONED SEAT, ADJUSTABLE
ARMRESTS, STRAP SUPPORT, AND
A COMFORTABLE FOOTREST FOR
ENHANCED DONOR STABILITY AND
RELAXATION.**



AOH 164 (D)

BLOOD DONOR CHAIR

BLOOD DONOR CHAIR

MS POWDER-COATED FRAME WITH CUSHIONED SEAT, ADJUSTABLE ARMRESTS, AND STRAP SUPPORT FOR ADDED DONOR STABILITY AND COMFORT.



AOH 164 (E)

BLOOD DONOR CHAIR

BLOOD DONOR CHAIR

MS POWDER-COATED FRAME WITH CUSHIONED SEAT, ADJUSTABLE ARMRESTS, STRAP SUPPORT, AND A COMFORTABLE FOOTREST FOR ENHANCED DONOR STABILITY AND RELAXATION.



AOH 165 (A)

KANGAROO CHAIR

A KANGAROO CHAIR IS A MEDICAL CHAIR DESIGNED FOR PATIENT COMFORT DURING PROCEDURES LIKE BLOOD DONATION OR DIALYSIS. IT FEATURES ADJUSTABLE ARMRESTS, A RECLINABLE BACKREST, AND PADDED CUSHIONS FOR SUPPORT. COMPACT AND STURDY, IT'S IDEAL FOR CLINICAL USE



AOH 165 (B)

KANGAROO CHAIR

RECLINABLE MEDICAL CHAIR WITH ADJUSTABLE BACKREST, LEG REST, AND PADDED ARMRESTS. IDEAL FOR DIALYSIS, BLOOD DONATION, AND PATIENT EXAMINATIONS. DURABLE STEEL FRAME WITH CUSHIONED COMFORT.



AOH 165 (C)

KANGAROO CHAIR

RECLINABLE MEDICAL CHAIR WITH ADJUSTABLE BACKREST, LEG REST, AND PADDED ARMRESTS. IDEAL FOR DIALYSIS, BLOOD DONATION, AND PATIENT EXAMINATIONS. DURABLE STEEL FRAME WITH CUSHIONED COMFORT.



AOH 166 (A)

BED CUM CHAIR

EXAMINATION BED CUM CHAIR

WITH ADJUSTABLE BACKREST, LEG REST, AND FOLDABLE DESIGN. VERSATILE FOR EXAMS AND TREATMENTS, OFFERING COMFORT AND DURABILITY.



GSTIN NO: 23AMPPH9600J1ZX

AOH 166 (B)

CHILD BED

**CHILD BED - BABY COT / MS BODY /
POWDER
COATED / 4 SIDE RAILING /
DIMENSIONS = W
24" X L 48" X H 22" (STANDARD SIZE)**



AOH 167 (A)

BABY CRADLE

**BABY CRADLE MS BODY
POWDER COATED
REGULAR MODEL**



AOH 167 (B)

BABY CRADLE

**BABY CRADLE MS BODY
POWDER COATED, WITH
WHEELS (DELUX MODEL)**



AOH 167 (C)

BABY CRADLE

**HEAVY-DUTY STAINLESS STEEL BABY
CRADLE (SS 202 GRADE): CRAFTED FROM
DURABLE SS 202 GRADE FOR RUST
RESISTANCE AND STRENGTH, THIS CRADLE
FEATURES A VENTILATED MESH BASKET,
SMOOTH EDGES, AND A COMFORTABLE
MATTRESS. BUILT WITH A STURDY FRAME
FOR STABILITY, WITH OPTIONAL WHEELS
FOR MOBILITY.**



AOH 167 (D)

AUTO-LOADER AMBULANCE STRETCHER

THE MECHANICAL FOLDING LEGS ARE CONTROLLED BY THE HANDLES AT BOTH ENDS OF THE STRETCHER, WHICH CAN BE EASILY LOWERED WHEN ENTERING THE AMBULANCE. BACKREST LIFTING 0-75°. ALUMINIUM ALLOY MATERIAL WITH GUARDRAIL AND 5" SILENCE CASTER.



AOH 167 (E)

STRETCHER TROLLEY

DIMENSION- W22" × L 78" × H30"



STRETCHER TROLLEY

**MS BODY MS POWDER
COATED WITH 6" WHEELS.**

AOH 167 (F)

STRETCHER TROLLEY

STRETCHER TROLLEY

**SS BODY HEAVY WITH 6"
WHEELS.**



DIMENSION- W22" × L 78" × H30"

AOH 167 (G)

STRETCHER TROLLEY

FOLDABLE HOSPITAL STRETCHER

**WITH STURDY 6" WHEELS,
DESIGNED FOR MOBILITY AND
EFFICIENT PATIENT CARE.**

DIMENSION- W22" × L 78" × H30"



AOH 167 (H)

STRETCHER TROLLEY

DIMENSION- W22" × L 78" × H30"



**HOSPITAL STRETCHER FULL SS
WITH 6" WHEELS, SIDE
RAILINGS, O2 CYLINDER SLOT,
AND STORAGE SHELF FOR
ENHANCED PATIENT CARE AND
SAFETY.**

AOH 167 (I)

STRETCHER TROLLEY

**HOSPITAL STRETCHER FULL SS
WITH 6" WHEELS, SIDE
RAILINGS, 2" CUSHIONED TOP,
IV STAND, O2 CYLINDER SLOT,
AND STORAGE SHELF FOR
ENHANCED PATIENT CARE AND
SAFETY.**

DIMENSION- W22" × L 78" × H30"



AOH 167 (J)

CRASH CART TROLLEY

CRASH CART TROLLEY

**DURABLE, FULL MS BODY
POWDER-COATED DESIGN
WITH 6 SPACIOUS ALKON PVC
DRAWERS, SMOOTH WHEELS
FOR MOBILITY, INTEGRATED
CYLINDER SLOT, AND IV ROD
FOR EFFICIENT EMERGENCY
USE.**



AOH 167 (K)

CRASH CART TROLLEY

CRASH CART TROLLEY

**DURABLE, FULL SS BODY
DESIGN WITH 6 SPACIOUS
ALKON PVC DRAWERS,
SMOOTH WHEELS FOR
MOBILITY, INTEGRATED
CYLINDER SLOT, AND IV ROD
FOR EFFICIENT EMERGENCY
USE.**





AOH 167 (M)

CRASH CART TROLLEY

MINI CRASH CART TROLLEY:

DURABLE, FULL MS BODY POWDER-COATED AND SS TOP DESIGN WITH 4 SPACIOUS IRON POWDER COATED DRAWERS, SMOOTH WHEELS FOR MOBILITY, INTEGRATED CYLINDER SLOT, AND IV ROD FOR EFFICIENT EMERGENCY USE.

AOH 167 (L)

CRASH CART TROLLEY

CRASH CART TROLLEY:

DURABLE, FULL MS BODY POWDER-COATED AND SS TOP DESIGN WITH 6 SPACIOUS ALKON PVC DRAWERS, SMOOTH WHEELS FOR MOBILITY, INTEGRATED CYLINDER SLOT, AND IV ROD FOR EFFICIENT EMERGENCY USE.



AOH 168 (A)

OT DRUG TROLLEY

THIS IS A MULTI-BIN DRUG TROLLEY DESIGNED FOR EFFICIENT STORAGE AND ORGANIZATION OF MEDICINES AND MEDICAL SUPPLIES. IT FEATURES MULTIPLE COLORFUL, REMOVABLE 7 ROW OF BINS FOR CATEGORIZATION, MOUNTED ON A STURDY FRAME WITH WHEELS FOR EASY MOBILITY. IDEAL FOR HOSPITAL AND CLINICAL USE.



AOH 168 (B)

OT DRUG TROLLEY

THIS IS A MULTI-BIN DRUG TROLLEY DESIGNED FOR EFFICIENT STORAGE AND ORGANIZATION OF MEDICINES AND MEDICAL SUPPLIES. IT FEATURES MULTIPLE COLORFUL, REMOVABLE 6 ROW OF BINS FOR CATEGORIZATION, MOUNTED ON A STURDY FRAME WITH WHEELS FOR EASY MOBILITY. IDEAL FOR HOSPITAL AND CLINICAL USE.

AOH 168 (C)

OT DRUG TROLLEY

THIS IS A MINI MULTI-BIN DRUG TROLLEY . IT FEATURES MULTIPLE COLORFUL, REMOVABLE 5 ROW OF BINS FOR CATEGORIZATION, WITH 3 DRAWERS



AOH 168 (D)

OT DRUG TROLLEY

THIS IS A MINI MULTI-BIN DRUG TROLLEY . IT FEATURES MULTIPLE COLORFUL, REMOVABLE 5 ROW OF BINS FOR CATEGORIZATION, WITH 2 SHELVES AND 1 INTEGRATED STORAGE RACK.



AOH 168 (E)

OT DRUG TROLLEY

THIS IS A JUMBO MULTI-BIN DRUG TROLLEY . IT FEATURES MULTIPLE COLORFUL, REMOVABLE 4 ROW OF BINS FOR CATEGORIZATION, WITH 3 DRAWERS



AOH 168 (F)

OT EMERGENCY TROLLEY



AOH 169 (A)

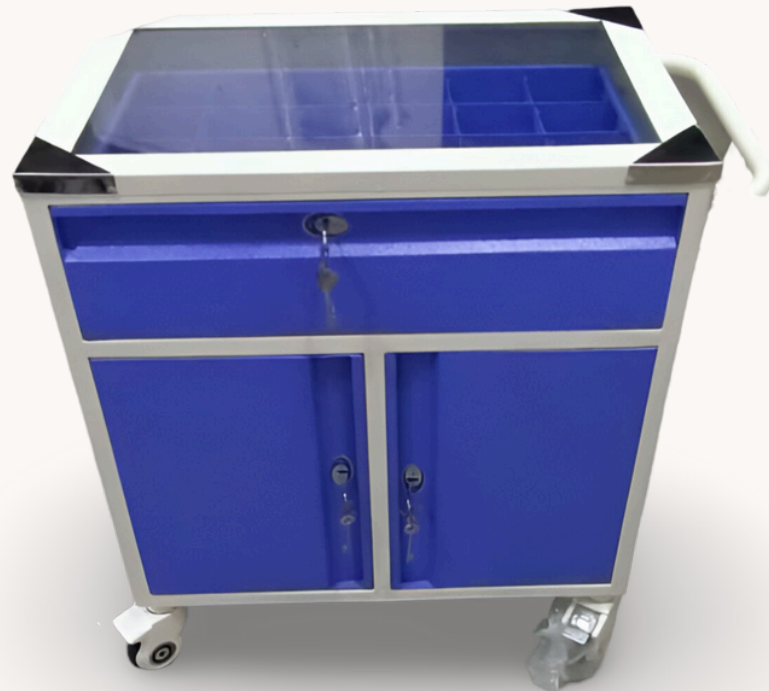
MEDICINE TROLLEY

MEDICINE TROLLEY:

**DURABLE, FULL MS BODY
POWDER-COATED AND GLASS
TOP DESIGN WITH 1 CUBICAL
DRAWERS AND 1 CABINET,
SMOOTH 4" IMPORTED WHEELS
FOR MOBILITY, INTEGRATED 1
STORAGE SHELF.**

THIS HOSPITAL EMERGENCY

**TROLLEY FEATURES AN ABS
TOP, DEFIBRILLATOR SHELF, IV
POLE, SLIDING SHELF,
MULTIPLE LABELED DRAWERS,
CENTRALIZED LOCK, WASTE
BINS, AND NOISELESS
CASTORS. IT ALSO INCLUDES A
CPR BOARD, POWER SOCKETS,
AND A CYLINDER HOLDER FOR
EFFICIENT EMERGENCY CARE.**



Dimensions- D20" × L30" × H30"

AOH 169 (B)

MEDICINE TROLLEY

Dimensions- 20" × 30"

MEDICINE TROLLEY:

DURABLE, FULL MS BODY POWDER-COATED AND SS TOP DESIGN WITH 6 SPACIOUS ALKON PVC DRAWERS, SMOOTH WHEELS FOR MOBILITY, INTEGRATED STORAGE SHELF IN MS. OPTIONAL- (IRON POWDER COATED DRAWERS)



AOH 169 (C)

MEDICINE TROLLEY

MEDICINE TROLLEY:

DURABLE, FULL MS BODY POWDER-COATED AND SS TOP DESIGN WITH 4 SPACIOUS IRON DRAWERS, SMOOTH WHEELS FOR MOBILITY, INTEGRATED STORAGE SHELF IN SS.



Dimensions- 20" × 30"

AOH 169 (D)

MEDICINE TROLLEY

Dimensions- 20" x 30"



MEDICINE TROLLEY:

DURABLE, FULL MS BODY POWDER-COATED AND SS TOP DESIGN WITH 2 SPACIOUS IRON DRAWERS, SMOOTH WHEELS FOR MOBILITY, INTEGRATED 2 STORAGE SHELF IN SS.

AOH 169 (E)

MEDICINE ICU BED

MEDICINE TROLLEY:

DURABLE, FULL MS BODY POWDER-COATED AND SS TOP DESIGN WITH 5 SPACIOUS IRON DRAWERS, SMOOTH WHEELS FOR MOBILITY, INTEGRATED 2 STORAGE SHELF IN SS.



Dimensions- 20" x 30"

AOH 170 (A)

INSTRUMENT TROLLEY

A FULL MILD STEEL INSTRUMENT TROLLEY WITH TWO STURDY, EASY-TO-CLEAN SHELVES AND FOUR SWIVEL CASTERS FOR SMOOTH MOBILITY, IDEAL FOR HOSPITALS, CLINICS, AND LABORATORIES.



AOH 170 (B)

INSTRUMENT TROLLEY

A FULL STAINLESS STEEL INSTRUMENT TROLLEY WITH TWO STURDY, EASY-TO-CLEAN SHELVES AND FOUR SWIVEL CASTERS FOR SMOOTH MOBILITY, IDEAL FOR HOSPITALS, CLINICS, AND LABORATORIES.



AOH 170 (C)

INSTRUMENT TROLLEY

A FULL MILD STEEL INSTRUMENT WITH SS TOP TROLLEY WITH TWO STURDY, EASY-TO-CLEAN SHELVES AND FOUR SWIVEL CASTERS FOR SMOOTH MOBILITY, IDEAL FOR HOSPITALS, CLINICS, AND LABORATORIES.



AOH 171 (A)

**DRESSING
TROLLEY**

DRESSING TROLLEY

A STURDY DRESSING TROLLEY WITH A POWDER-COATED MILD STEEL FRAME, TWO SPACIOUS SHELVES, A STAINLESS STEEL BASIN, AND A BUCKET. EQUIPPED WITH FOUR SMOOTH-ROLLING CASTERS, IT IS IDEAL FOR HOSPITALS AND CLINICS.



AOH 171 (B)

**DRESSING
TROLLEY**

DRESSING TROLLEY

A STURDY DRESSING TROLLEY WITH A POWDER-COATED MILD STEEL FRAME WITH SS TOP, TWO SPACIOUS SHELVES, A STAINLESS STEEL BASIN, AND A BUCKET. EQUIPPED WITH FOUR SMOOTH-ROLLING CASTERS, IT IS IDEAL FOR HOSPITALS AND CLINICS.



AOH 171 (C)

**DRESSING
TROLLEY**

DRESSING TROLLEY

A STURDY DRESSING TROLLEY IN STAINLESS STEEL FRAME, TWO SPACIOUS SHELVES, A STAINLESS STEEL BASIN, AND A BUCKET. EQUIPPED WITH FOUR SMOOTH-ROLLING CASTERS, IT IS IDEAL FOR HOSPITALS AND CLINICS.



AOH 172 (A)

LAPAROSCOPIC TROLLEY

**MS POWDER COATED
LAPAROSCOPIC TROLLEY WITH
MULTIPLE SHELVES, A POWER
PANEL, A BOTTOM DRAWER, SIDE
HANDLES, AND LOCKABLE
WHEELS, DESIGNED FOR
ORGANIZING AND MOBILIZING
LAPAROSCOPIC EQUIPMENT
DURING SURGERIES.**



AOH 172 (B)

LAPAROSCOPIC TROLLEY

**SS LAPAROSCOPIC TROLLEY WITH
MULTIPLE SHELVES, A POWER PANEL, A
BOTTOM DRAWER, SIDE HANDLES, AND
LOCKABLE WHEELS, DESIGNED FOR
ORGANIZING AND MOBILIZING
LAPAROSCOPIC EQUIPMENT DURING
SURGERIES.**



AOH 172 (C)

LAPAROSCOPIC TROLLEY

**MS MINI POWDER COATED
LAPAROSCOPIC TROLLEY WITH
MULTIPLE SHELVES, A POWER
PANEL, A BOTTOM DRAWER, SIDE
HANDLES, AND LOCKABLE
WHEELS, DESIGNED FOR
ORGANIZING AND MOBILIZING
LAPAROSCOPIC EQUIPMENT
DURING SURGERIES.**



AOH 173 (A)

INSTRUMENT CABINET

INSTRUMENT CABINET

**SINGLE DOOR FULL MS
POWDER COATED WITH GLASS
DOOR+ MS SHELVES/ FIXED.**

DIMENSIONS- D 18" x W 24" x H 60"



AOH 173 (B)

INSTRUMENT CABINET

INSTRUMENT CABINET

**DOUBLE DOOR FULL MS
POWDER COATED WITH GLASS
DOOR+ MS SHELVES/ FIXED.**



AOH 174 (A)

OFFICE CUPBOARD

OFFICE CUPBOARD

**DOUBLE DOOR FULL MS
POWDER COATED WITH LOCK
KEY / 3 SHELVES.**

DIMENSIONS- L 72" x W 36" x D 15"



AOH 175 (A)

LOCKERS

LOCKER ROOM LOCKERS

**FULL MS POWDER COATED
WITH 18 LOCKERS**



DIMENSIONS- L 15" x W 36" x H 28"

38

AOH 176 (A)

Laparoscopic Trolley

MS POWDER COATED LAPAROSCOPIC TROLLEY WITH MULTIPLE SHELVES, A POWER PANEL, A BOTTOM DRAWER, SIDE HANDLES, AND LOCKABLE WHEELS, DESIGNED FOR ORGANIZING AND MOBILIZING LAPAROSCOPIC EQUIPMENT DURING SURGERIES.

Dimensions- 16"× 16"



AOH 176 (B)

Laparoscopic Trolley

Dimensions- 16"× 16"

SS LAPAROSCOPIC TROLLEY WITH MULTIPLE SHELVES, A POWER PANEL, A BOTTOM DRAWER, SIDE HANDLES, AND LOCKABLE WHEELS, DESIGNED FOR ORGANIZING AND MOBILIZING LAPAROSCOPIC EQUIPMENT DURING SURGERIES.



AOH 177 (A)

Z- ECG TROLLEY

Z-TYPE ECG TROLLEY:

MS POWDER-COATED FRAME WITH 2" WHEELS. COMPACT, STABLE, AND EASY TO MOVE—IDEAL FOR ECG MACHINE SUPPORT.



AOH 177 (B)

ECG TROLLEY

**ECG TROLLEY (MS, POWDER COATED):
MADE FROM DURABLE MILD STEEL WITH A
POWDER-COATED FINISH. FEATURES A TOP
SHELF WITH SIDE RAILS, ONE STORAGE
DRAWER, AND A LOWER UTILITY SHELF. FITTED
WITH 4 SMOOTH 2" CASTOR WHEELS FOR EASY
MOBILITY—IDEAL FOR ECG EQUIPMENT
HANDLING IN MEDICAL ENVIRONMENTS.**



AOH 177 (C)

ECG TROLLEY

**SS LAPAROSCOPIC TROLLEY WITH
MULTIPLE SHELVES, A POWER PANEL, A
BOTTOM DRAWER, SIDE HANDLES, AND
LOCKABLE WHEELS, DESIGNED FOR
ORGANIZING AND MOBILIZING
LAPAROSCOPIC EQUIPMENT DURING
SURGERIES.**



AOH 177 (D)

Bed Side Trolley

**COMPACT AND DURABLE
HOSPITAL BEDSIDE LOCKER WITH
TWO SHELVES, PROTECTIVE TOP
RAILING, AND ANTI-SLIP RUBBER
LEGS—IDEAL FOR CLINICS AND
PATIENT CARE AREAS.**



AOH 177 (E)

Bed Side locker

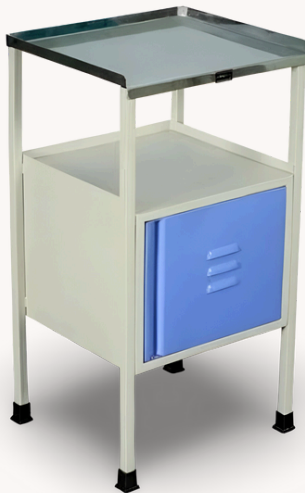
PREMIUM BEDSIDE LOCKER WITH STAINLESS STEEL TOP, A SMOOTH-SLIDING DRAWER, SPACIOUS OPEN SHELF, AND BOTTOM CABINET. FITTED WITH CASTOR WHEELS FOR EASY MOBILITY—PERFECT FOR HOSPITAL AND CLINIC USE.



AOH 177 (F)

Bed Side Locker

ELEGANT HOSPITAL BEDSIDE LOCKER FEATURING A STAINLESS STEEL TOP, ONE OPEN SHELF, AND A SECURE BOTTOM CABINET. STURDY BUILD WITH RUBBER-TIPPED LEGS FOR STABILITY—IDEAL FOR PATIENT ROOMS AND NURSING CARE.



AOH 177 (G)

Bed Side Locker

HIGH-QUALITY HOSPITAL BEDSIDE LOCKER WITH DURABLE ABS TOP, SMOOTH-ROLLING CASTOR WHEELS, ONE DRAWER, AND ONE CABINET WITH INTEGRATED HANDLE DESIGN. IDEAL FOR PATIENT CONVENIENCE AND MODERN HOSPITAL ENVIRONMENTS.



AOH 177 (H)

**BED SIDE
LOCKER**



PREMIUM BEDSIDE LOCKER WITH STAINLESS STEEL TOP, A SMOOTH-SLIDING DRAWER, SPACIOUS OPEN SHELF, AND BOTTOM CABINET. WITH TWO WHEELS AT BACK PERFECT FOR HOSPITAL AND CLINIC USE.

AOH 177 (I)

**BED SIDE
LOCKER**

PREMIUM HOSPITAL BEDSIDE LOCKER MADE OF CRCA STEEL WITH A STAINLESS STEEL TOP AND THREE-SIDE RAILING. FEATURES ONE DRAWER, ONE CABINET, AND A POWDER-COATED FINISH FOR ENHANCED DURABILITY —IDEAL FOR HOSPITALS AND NURSING HOMES.



AOH 178 (A)

**Food
Trolley**

**FOOD / CARDIAC TROLLEY -
NOVAPAN OR MS TOP / MS
BODY / POWDER COATED /
DIMENSION = 18" X 24" X 30"**



AOH 178 (B)

**Food
Trolley**

**FOOD / CARDIAC TROLLEY -
NOVAPAN OR MS TOP / MS
BODY / POWDER COATED /
DIMENSION = 18" X 24" X 30"
/ 2" WHEELS / KNOB UP &
DOWN**



AOH 179 (A)

**Mayo
Trolley**

**MAYO TROLLEY WITH MS BODY
AND STAINLESS STEEL TRAY.
FITTED WITH 2" CASTER WHEELS
FOR SMOOTH MOBILITY.
HEIGHT ADJUSTABLE USING SIDE
KNOB.**



AOH 179 (B)

**MAYO
TROLLEY**



**MAYO TROLLEY WITH SS
BODY AND STAINLESS
STEEL TRAY.**

**FITTED WITH 2" CASTER
WHEELS FOR SMOOTH
MOBILITY.**

**HEIGHT ADJUSTABLE
USING SIDE KNOB.**

AOH 179 (C)

**MAYO
TROLLEY**

**MAYO TROLLEY WITH FULL
STAINLESS STEEL TRAY AND
FRAME.**

**EQUIPPED WITH 2" CASTER
WHEELS FOR SMOOTH
MOVEMENT.**

**DUAL SIDE KNOBS FOR EASY
HEIGHT ADJUSTMENT.**



AOH 180 (A)

**OVER BED
TABLE**



**OVER BED TABLE WITH
POWDER-COATED STEEL FRAME
AND LAMINATED TOP.
DESIGNED FOR PATIENT
CONVENIENCE DURING MEALS
OR ACTIVITIES.
SMOOTH-ROLLING CASTORS
ENSURE EASY POSITIONING
OVER THE BED.**

AOH 180 (B)

**OVER BED
TABLE**

**OVER BED TABLE WITH
POWDER-COATED STEEL FRAME
AND SS TOP.
DESIGNED FOR PATIENT
CONVENIENCE DURING MEALS
OR ACTIVITIES.
SMOOTH-ROLLING CASTORS
ENSURE EASY POSITIONING
OVER THE BED.**



AOH 181 (A)

LINEN TROLLEY



AOH 181 (B)

LINEN TROLLEY

**PLASTIC LINEN TROLLEY WITH LID
STURDY AND HYGIENIC PLASTIC LINEN
TROLLEY EQUIPPED WITH A SECURE
LID FOR ODOR CONTROL.**

**MOUNTED ON A ROBUST STAINLESS
STEEL FRAME WITH A CURVED PUSH
HANDLE FOR EASY MANEUVERING.**

**FITTED WITH HEAVY-DUTY CASTORS
FOR SMOOTH MOBILITY, IDEAL FOR
HOSPITAL LINEN COLLECTION AND
TRANSPORT.**

**PERFECT FOR INFECTION CONTROL
AND ORGANIZED WASTE HANDLING.**



AOH 181 (C)

Linen TROLLEY

DURABLE PLASTIC LINEN TROLLEY WITH LID, MILD STEEL FRAME, AND SMOOTH-ROLLING CASTORS—IDEAL FOR SAFE AND HYGIENIC HOSPITAL LINEN TRANSPORT.



AOH 182 (A)

Dustbin Trolley

DUSTBIN TROLLEY TRIPLE-BIN TROLLEY WITH COLOR-CODED (BLUE, RED, YELLOW) BINS FOR WASTE SEGREGATION. DURABLE FRAME WITH WHEELS AND SWING LIDS FOR EASY, HYGIENIC USE IN HOSPITALS AND CLINICS.



AOH 182 (B)

Dustbin Trolley

DUSTBIN TROLLEY MS BODY TRIPLE-BIN TROLLEY WITH COLOR-CODED (BLUE, RED, YELLOW) BINS FOR WASTE SEGREGATION. DURABLE FRAME WITH WHEELS AND SWING LIDS FOR EASY, HYGIENIC USE IN HOSPITALS AND CLINICS.



AOH 182 (C)

DUSTBIN TROLLEY



DUSTBIN TROLLEY SS BODY

TRIPLE-BIN TROLLEY WITH COLOR-CODED (BLUE, RED, YELLOW) BINS FOR WASTE SEGREGATION. DURABLE FRAME WITH WHEELS AND SWING LIDS FOR EASY, HYGIENIC USE IN HOSPITALS AND CLINICS.

AOH 183 (A)

WINGER TROLLEY

WINGER TROLLEY
COMPACT AND DURABLE 3-BUCKET WINGER TROLLEY WITH MOP WRINGER. COLOR-CODED BINS FOR DISINFECTANT WATER, DIRTY WATER, AND DETERGENT SOLUTION ENSURE EFFECTIVE FLOOR CLEANING IN HOSPITALS AND CLINICS. FITTED WITH WHEELS FOR SMOOTH MOBILITY AND HYGIENIC OPERATION.



AOH 184 (A)

DOUBLE BASIN STAND

STAINLESS STEEL DOUBLE BASIN STAND WITH WHEELS. IDEAL FOR SURGICAL USE AND HANDWASHING, OFFERING UPPER AND LOWER BASIN SUPPORT FOR EFFICIENT WORKFLOW.



AOH 184 (B)

MINI BASIN

MOBILE SINGLE BASIN STAND WITH SMOOTH-ROLLING WHEELS. MADE FROM STAINLESS STEEL, SUITABLE FOR QUICK DISPOSAL OR CLEANING TASKS IN MEDICAL SETTINGS.



AOH 184 (C)

SINGLE BASIN STAND

STURDY SINGLE BASIN STAND WITH NON-RUSTING STEEL BOWL AND MS FIXED LEGS. COMPACT AND STABLE FOR CLINICS, HOSPITALS, AND NURSING HOMES.



AOH 184 (D)

**DOUBLE BASIN
STAND**



STAINLESS STEEL DOUBLE

**BASIN STAND WITH
DURABLE MS BASE AND
SMOOTH CASTER WHEELS.
IDEAL FOR HOSPITALS AND
ICUS FOR QUICK ACCESS
AND MOBILITY DURING
PROCEDURES.**

AOH 184 (E)

**DOUBLE BASIN
STAND**

STABLE DOUBLE BASIN

**STAND WITH STRONG MS
FRAME AND SS BOWLS.
DESIGNED FOR FIXED USE IN
WARDS AND TREATMENT
AREAS FOR SAFE MEDICAL
WASTE HANDLING OR
WASHING.**



AOH 185 (A)

**SCRUB
STATION**

**SCRUB STATION WITHOUT FOOT
PEDAL – 4.5 FEET
STAINLESS STEEL SCRUB
STATION WITH 2 ELBOW-
OPERATED TAPS. SIZE: 4.5 FEET,
AVAILABLE IN SS 202 AND SS 304
GRADES. SIMPLE AND DURABLE
DESIGN FOR SURGICAL
HANDWASHING IN HOSPITALS
AND OPERATION THEATERS.**



AOH 185 (B)

**SCRUB
STATION**

**PEDAL FOOT OPERATED SCRUB
STATION – 4.5 FEET
STAINLESS STEEL SCRUB
STATION WITH 2 ELBOW-
OPERATED TAPS AND DUAL
FOOT PEDALS FOR HANDS-FREE
HYGIENE. SIZE: 4.5 FEET,
AVAILABLE IN BOTH SS 202 AND
SS 304 GRADES. IDEAL FOR
OPERATION THEATERS AND
STERILE ENVIRONMENTS,
ENSURING MAXIMUM HYGIENE
AND DURABILITY.**



AOH 185 (C)

**SCRUB
STATION**

WALL-MOUNTED SCRUB



COMPACT 4-FEET WALL-MOUNTED SCRUB STATION WITH 2 ELBOW-OPERATED TAPS. MADE FROM HIGH-QUALITY SS 202 OR SS 304 GRADE. IDEAL FOR SPACE-SAVING INSTALLATION IN OPERATION THEATERS AND STERILE ZONES.

AOH 185 (D)

**SCRUB
STATION**

**WALL-MOUNTED SCRUB
STATION – 3 FEET (SINGLE TAP)**

3-FEET WALL-MOUNTED SCRUB STATION WITH 1 ELBOW-OPERATED TAP. AVAILABLE IN SS 202 AND SS 304 GRADES. SPACE-EFFICIENT AND DURABLE, PERFECT FOR COMPACT SURGICAL OR CLINICAL SETUPS.



AOH 186 (A)

**BED SIDE
SCREEN**

**2-FOLD BEDSIDE SCREEN – 3
SIDE WITH CURTAINS**

**POWDER-COATED MS BODY
BEDSIDE SCREEN WITH 2 FOLDS
AND 3-SIDE COVERAGE. FITTED
WITH SMOOTH WHEELS FOR
EASY MOBILITY AND INCLUDES
WASHABLE CURTAINS. IDEAL
FOR PATIENT PRIVACY IN
HOSPITALS AND CLINICS.**



AOH 186 (B)

**BED SIDE
SCREEN**

**2-FOLD BEDSIDE SCREEN – 3
SIDE WITH CURTAINS (SS 202)**

**STAINLESS STEEL (SS 202
GRADE) 2-FOLD BEDSIDE
SCREEN WITH 3-SIDE
COVERAGE. COMES WITH
WASHABLE CURTAINS AND
SMOOTH-ROLLING WHEELS.
DURABLE AND RUST-RESISTANT,
PERFECT FOR HOSPITAL AND
CLINICAL USE.**



AOH 186 (C)

BED SIDE SCREEN



**3-FOLD BEDSIDE SCREEN – 4
SIDE WITH CURTAINS (MS BODY)
POWDER-COATED MS BODY**

**BEDSIDE SCREEN WITH 3 FOLDS
AND FULL 4-SIDE COVERAGE.
INCLUDES WASHABLE CURTAINS
AND CASTOR WHEELS FOR EASY
MOVEMENT. DESIGNED FOR
MAXIMUM PATIENT PRIVACY IN
HOSPITALS AND HEALTHCARE
FACILITIES.**

AOH 186 (D)

BED SIDE SCREEN

**3-FOLD BEDSIDE SCREEN – 4
SIDE WITH CURTAINS (SS 202)**

**HIGH-QUALITY SS 202 GRADE
BEDSIDE SCREEN WITH 3 FOLDS
AND 4-SIDE COVERAGE.
EQUIPPED WITH WASHABLE
CURTAINS AND SMOOTH
WHEELS FOR MOBILITY. RUST-
RESISTANT AND IDEAL FOR
LONG-TERM USE IN HOSPITALS
AND CLINICS.**



AOH 187 (A)

IV Stand

**IV STAND – 3 LEG BASE
STURDY IV STAND WITH 3-LEGGED
BASE FOR STABILITY. HEIGHT
ADJUSTABLE WITH MILD STEEL ROD
AND HOOKS FOR FLUID BOTTLES.
SUITABLE FOR CLINICS AND WARDS.**



AOH 187 (B)

IV STAND

**IV STAND – 4 LEG BASE
DURABLE IV STAND WITH 4-LEGGED
BASE FOR EXTRA BALANCE.
ADJUSTABLE HEIGHT AND MILD
STEEL CONSTRUCTION WITH BOTTLE
HOOKS. IDEAL FOR HOSPITALS AND
NURSING HOMES.**



AOH 187 (C)

IV STAND

**IV STAND – 5 LEG BASE WITH
WHEELS
PREMIUM IV STAND WITH 5-LEGGED
BASE AND SMOOTH-ROLLING
WHEELS FOR EASY MOBILITY.
HEIGHT ADJUSTABLE, MILD STEEL
ROD, AND MULTIPLE HOOKS FOR
FLUID BOTTLES. PERFECT FOR ICUS
AND PATIENT CARE AREAS.**



AOH 187 (D)

**I.V
STAND**

**IV STAND – 3 LEG BASE
STURDY IV STAND WITH 3-LEGGED
BASE FOR STABILITY. HEIGHT
ADJUSTABLE WITH STAINLESS
STEEL ROD AND HOOKS FOR FLUID
BOTTLES. SUITABLE FOR CLINICS
AND WARDS.**



AOH 187 (E)

**I.V
STAND**

**IV STAND – 4 LEG BASE
DURABLE IV STAND WITH 4-LEGGED
BASE FOR EXTRA BALANCE.
ADJUSTABLE HEIGHT AND
STAINLESS STEEL CONSTRUCTION
WITH BOTTLE HOOKS. IDEAL FOR
HOSPITALS AND NURSING HOMES.**



AOH 187 (F)

**I.V
STAND**

**IV STAND – 5 LEG BASE WITH
WHEELS
PREMIUM IV STAND WITH 5-LEGGED
BASE AND SMOOTH-ROLLING
WHEELS FOR EASY MOBILITY.
HEIGHT ADJUSTABLE, STAINLESS
STEEL ROD, AND MULTIPLE HOOKS
FOR FLUID BOTTLES. PERFECT FOR
ICUS AND PATIENT CARE AREAS.**



AOH 187 (G)

**I.V
ROD**



**IV ROD IN MS/SS FOR BEDS
DURABLE MILD STEEL IV ROD
SUITABLE FOR HOSPITAL BEDS,
FEATURING ADJUSTABLE
HEIGHT AND POWDER-COATED
FINISH FOR CORROSION
RESISTANCE.**

AVAILABLE IN MS AND SS BOTH

AOH 187 (H)

**I.V
ROD**

**IV ROD IN MS/SS FOR BEDS
DURABLE MILD STEEL IV ROD
SUITABLE FOR HOSPITAL BEDS,
FEATURING HEIGHT AND
POWDER-COATED FINISH FOR
CORROSION RESISTANCE.**

AVAILABLE IN MS AND SS BOTH



AOH 188 (A)

Waiting Chair

3-SEATER WAITING CHAIR – CHROME

ELEGANT CHROME-FINISHED 3-SEATER WITH CUSHIONED SEAT AND BACK, OFFERING COMFORT AND A SLEEK LOOK FOR RECEPTION AND WAITING AREAS.



AOH 188 (B)

WAITING CHAIR

3-SEATER WAITING CHAIR – MS POWDER-COATED MILD STEEL 3-SEATER WITH CUSHIONED BACK AND SEAT, COMBINING STRENGTH AND COMFORT FOR ECONOMICAL SEATING SOLUTIONS.



AOH 188 (C)

WAITING CHAIR

3-SEATER WAITING CHAIR – SS STURDY STAINLESS STEEL 3-SEATER WITH CUSHIONED SEAT AND BACKREST, DESIGNED FOR DURABILITY, HYGIENE, AND COMFORT IN HIGH-TRAFFIC ZONES.



AOH 188 (D)

WAITING CHAIR

**3-SEATER WAITING CHAIR – MS
POWDER-COATED MILD STEEL
3-SEATER WITH HAND REST
COMBINING STRENGTH AND
COMFORT FOR ECONOMICAL
SEATING SOLUTIONS.**



AOH 188 (E)

WAITING CHAIR

**3-SEATER WAITING CHAIR – MS
POWDER-COATED MILD STEEL
3-SEATER COMBINING
STRENGTH AND COMFORT FOR
ECONOMICAL SEATING
SOLUTIONS.**



AOH 188 (F)

WAITING CHAIR

**POWDER-COATED SIMPLE BENCH
ROBUST MILD STEEL BENCH WITH
A SMOOTH POWDER-COATED
FINISH, DESIGNED FOR
DURABILITY AND EASY
MAINTENANCE IN HIGH-USE
AREAS.**



AOH 188 (G)

WAITING CHAIR

**6- SEATER WAITING CHAIR –
MS
POWDER-COATED MILD
STEEL 6-SEATER COMBINING
STRENGTH AND COMFORT
FOR ECONOMICAL SEATING**



AOH 189 (A)

DOCTOR CHAIR

**DOCTOR REVOLVING CHAIR
ERGONOMIC REVOLVING CHAIR WITH
SMOOTH-ROLLING WHEELS, HEIGHT
ADJUSTMENT, AND FULL CUSHIONING
FOR ENHANCED COMFORT DURING
LONG HOURS OF USE.**



AOH 190 (A)

OFFICE CHAIR

**DOCTOR REVOLVING CHAIR – MESH
BACK
COMFORTABLE REVOLVING CHAIR WITH
CUSHIONED SEAT, BREATHABLE MESH
BACK, HEIGHT ADJUSTMENT, AND
SMOOTH-ROLLING WHEELS – IDEAL FOR
CLINICAL AND OFFICE USE.**



AOH 191 (A)

**SURGEON
CHAIR**



**SURGEON CHAIR –
STYLISH OFFICE CHAIR WITH
CHROME BASE, CUSHIONED
SEAT AND BACKREST,
INTEGRATED FOOTREST,
AND FIXED-HEIGHT DESIGN –
IDEAL FOR COUNTERS,
CLINICS, OR RECEPTION
AREAS.**

AOH 191 (B)

**SURGEON
CHAIR**

**SURGEON CHAIR –
STYLISH OFFICE CHAIR WITH
CHROME BASE, CUSHIONED
SEAT AND BACKREST,
INTEGRATED FOOTREST,
AND FIXED-HEIGHT DESIGN
WITH SMOOTH WHEELS –
IDEAL FOR COUNTERS,
CLINICS, OR RECEPTION
AREAS.**



AOH 192 (A)

**REVOLVING
CHAIR**

**3-LEG REVOLVING CHAIR –
REGULAR MODEL
STURDY 3-LEG REVOLVING
CHAIR WITH A POWDER-
COATED MILD STEEL BODY
AND POLISHED STAINLESS
STEEL TOP, DESIGNED FOR
REGULAR USE IN CLINICS,
LABS, AND HOSPITALS.**



AOH 192 (B)

**REVOLVING
CHAIR**

**4-LEG REVOLVING CHAIR –
DELUX MODEL
STURDY 4-LEG REVOLVING
CHAIR WITH A POWDER-
COATED MILD STEEL BODY
AND POLISHED STAINLESS
STEEL TOP, DESIGNED FOR
REGULAR USE IN CLINICS,
LABS, AND HOSPITALS.**



AOH 192 (C)

**REVOLVING
CHAIR**

**REVOLVING CHAIR – SS WITH
CUSHION TOP
STAINLESS STEEL REVOLVING
CHAIR WITH A COMFORTABLE
CUSHIONED TOP AND STABLE 3-
LEG BASE, SUITABLE FOR CLINICS,
LABS, AND REGULAR USE WITHOUT
WHEELS.**



AOH 192 (D)

**REVOLVING
CHAIR**

**3-LEG REVOLVING CHAIR – SS
REGULAR MODEL
DURABLE 3-LEG REVOLVING CHAIR
MADE ENTIRELY OF STAINLESS
STEEL WITH A POLISHED FINISH,
IDEAL FOR HYGIENIC AND LONG-
LASTING USE IN MEDICAL AND
LABORATORY SETTINGS.**



AOH 192 (E)

**REVOLVING
CHAIR**

**4-LEG REVOLVING CHAIR – SS
DELUXE MODEL
DURABLE 4-LEG REVOLVING CHAIR
MADE ENTIRELY OF STAINLESS
STEEL WITH A POLISHED FINISH,
IDEAL FOR HYGIENIC AND LONG-
LASTING USE IN MEDICAL AND
LABORATORY SETTINGS.**



AOH 193 (A)

**FIXED
STOOL**

**FIXED STOOL – FULL MS
STURDY FIXED STOOL MADE
ENTIRELY OF MILD STEEL WITH
A DURABLE POWDER-COATED
FINISH, IDEAL FOR LONG-
LASTING USE IN CLINICS,
HOSPITALS, AND
LABORATORIES.**



AOH 193 (B)

**FIXED
STOOL**



**FIXED STOOL – MS BODY WITH
SS TOP
DURABLE FIXED STOOL WITH A
POWDER-COATED MILD STEEL
BODY AND POLISHED STAINLESS
STEEL TOP, COMBINING
STRENGTH WITH HYGIENE FOR
MEDICAL AND LABORATORY
USE.**

AOH 194 (A)

FOOT STEP

**DOUBLE FOOT STEP – MS
STRONG DOUBLE-STEP STOOL MADE
FROM POWDER-COATED MILD STEEL,
DESIGNED FOR STABILITY AND EASE
OF ACCESS IN CLINICS, HOSPITALS,
AND EXAMINATION ROOMS.**



AOH 194 (C)

FOOT STEP

**SINGLE FOOT STEP – MS
POWDER-COATED MS STEP
STOOL FOR STABLE AND SAFE
USE IN MEDICAL SETTINGS.**



AOH 194 (B)

FOOT STEP

**DOUBLE FOOT STEP – SS
DURABLE DOUBLE-STEP
STOOL MADE ENTIRELY OF
STAINLESS STEEL,**

AOH 194 (D)

FOOT STEP

**SINGLE FOOT STEP – SS
STAINLESS STEEL STEP STOOL
OFFERING DURABILITY AND
HYGIENE FOR CLINICAL USE.**

AOH 195 (A)

O₂ Trolley

O₂ CYLINDER JUMBO TROLLEY – MS POWDER-COATED MILD STEEL TROLLEY WITH TWO WHEELS, DESIGNED TO SAFELY TRANSPORT JUMBO OXYGEN CYLINDERS IN MEDICAL SETTINGS.



AOH 195 (B)

O₂ Trolley

O₂ CYLINDER MINI TROLLEY – MS COMPACT POWDER-COATED MILD STEEL TROLLEY WITH TWO WHEELS, IDEAL FOR SAFE AND EASY TRANSPORT OF MINI OXYGEN CYLINDERS.



AOH 196 (A)

Monitor Stand

WALL-MOUNTED MONITOR STAND SPACE-SAVING, STURDY MONITOR STAND DESIGNED FOR WALL MOUNTING, IDEAL FOR SECURE AND ERGONOMIC SCREEN PLACEMENT IN CLINICAL AND WORK ENVIRONMENTS.



AOH 197 (A)

OFFICE TABLE

**OFFICE TABLE – MS FRAME WITH
SIDE DRAWER UNIT
STURDY OFFICE TABLE WITH A
POWDER-COATED MILD STEEL
FRAME AND LAMINATED WOODEN
TOP, FEATURING A BUILT-IN THREE-
DRAWER UNIT FOR ORGANIZED
STORAGE.**



AOH 197 (B)

OFFICE TABLE

**EXECUTIVE OFFICE TABLE –
DOUBLE PEDESTAL
HEAVY-DUTY OFFICE TABLE WITH
DUAL DRAWER PEDESTALS,
POWDER-COATED MS FRAME, AND
A LAMINATED TOP, OFFERING
AMPLE WORKSPACE AND STORAGE
FOR PROFESSIONAL SETTINGS.**



AOH 198 (A)

VETERINARY TABLE

**VETERINARY EXAMINATION TABLE –
SS
STAINLESS STEEL VETERINARY
TABLE WITH IV ROD, WASTE TRAY,
AND UTILITY HOOKS, DESIGNED
FOR DURABILITY, HYGIENE, AND
FUNCTIONALITY IN CLINICAL AND
ANIMAL CARE ENVIRONMENTS.**



AOH 199 (A)

O.T TABLE



ELECTRIC 4 FUNCTION OT TABLE

**FULLY MOTORIZED TABLE WITH
REMOTE CONTROL. PROVIDES
HEIGHT, BACKREST,
TRENDELENBURG, AND
REVERSE TRENDELENBURG
ADJUSTMENTS. STAINLESS
STEEL TOP WITH SECTIONAL
DESIGN. SMOOTH, SILENT
OPERATION WITH HEAVY-DUTY
STRUCTURE. INCLUDES
STANDARD SURGICAL
ACCESSORIES.**

AOH 199 (B)

O.T TABLE

HYDRAULIC OT TABLE

**STAINLESS STEEL TOP WITH
FIVE ADJUSTABLE SECTIONS.
HEIGHT CONTROLLED BY FOOT-
OPERATED HYDRAULIC PUMP.
OFFERS TRENDELENBURG,
LATERAL, FLEX/REFLEX
POSITIONS. DETACHABLE HEAD
AND LEG SECTIONS. INCLUDES
STANDARD ACCESSORIES.
HEAVY-DUTY, 360° ROTATING
BASE.**



AOH 199 (C)

O.T TABLE



SLIDING TOP ELECTRIC OT TABLE

MOTORIZED OT TABLE WITH LONGITUDINAL SLIDING TOP FOR C-ARM ACCESS. OFFERS ELECTRIC CONTROL OF HEIGHT, BACKREST, TRENDELENBURG, REVERSE TRENDELENBURG, AND LATERAL TILT. RADIOLUCENT STAINLESS STEEL TOP WITH SECTIONAL DESIGN. SMOOTH, PRECISE MOVEMENTS VIA HANDHELD REMOTE. COMES WITH STANDARD SURGICAL ACCESSORIES.

AOH 199 (D)

O.T TABLE

ELECTRIC GYNAECOLOGY & OBSTETRIC OT TABLE

MOTORIZED TABLE SPECIALLY DESIGNED FOR GYNAECOLOGY AND OBSTETRIC PROCEDURES. REMOTE-CONTROLLED HEIGHT AND BACKREST ADJUSTMENT. LEG END DETACHABLE WITH LITHOTOMY POSITION SUPPORTS. STAINLESS STEEL TOP WITH CUSHIONED MATTRESS. INCLUDES STANDARD ACCESSORIES LIKE LEG HOLDERS AND ARMRESTS. COMPACT, STURDY, AND EASY TO CLEAN.



AOH 199 (E)

O.T TABLE



**ELECTRIC OT TABLE WITH ORTHOPAEDIC ATTACHMENT
ELECTRIC OT TABLE WITH ORTHO ATTACHMENT FOR TRACTION PROCEDURES. REMOTE-CONTROLLED HEIGHT, BACKREST, TRENDELENBURG, REVERSE TRENDELENBURG, AND LATERAL TILT. RADIOLUCENT TOP WITH DETACHABLE ORTHO ACCESSORIES INCLUDING LEG TRACTION, LITHOTOMY POLES, AND SHOULDER SUPPORTS. SUITABLE FOR C-ARM IMAGING. HEAVY-DUTY CONSTRUCTION WITH PRECISE, SILENT MOTOR OPERATION.**

AOH 199 (F)

O.T TABLE

**HYDRAULIC OT TABLE WITH ORTHOPAEDIC ATTACHMENT
MANUALLY OPERATED HYDRAULIC OT TABLE WITH ORTHO ATTACHMENT FOR TRACTION AND POSITIONING. FOOT PEDAL CONTROLS HEIGHT ADJUSTMENT. RADIOLUCENT STAINLESS STEEL TOP WITH DETACHABLE ORTHO ACCESSORIES LIKE LEG TRACTION DEVICE, LITHOTOMY POLES, AND SHOULDER SUPPORTS. PROVIDES TRENDELENBURG, LATERAL, AND FLEX POSITIONS. STURDY, MOBILE, AND C-ARM COMPATIBLE.**





AOH 200 (A)

ANESTHESIA WORKSTATION

AN ADVANCED ANESTHESIA WORKSTATION FEATURING A 12-INCH TFT DISPLAY, TIDAL VOLUME RANGE OF 40–2000 ML, ADJUSTABLE I:E RATIO (1:9.9 TO 2.5:1), AND INSPIRATORY TIME (0.1–9.9 SEC). SUPPORTS CLOSED AND SEMI-CLOSED CIRCUIT SYSTEMS WITH O₂, N₂O, AND AIR SUPPLY. INCLUDES ROTARY KNOB WITH KEYPAD, INTEGRATED ALARMS, PEEP (0–30 CMH₂O), PRESSURE SUPPORT (1–50 CMH₂O), AND RESPIRATORY RATE (6–80 BPM). EQUIPPED WITH DUAL STORAGE DRAWERS, BATTERY BACKUP (10–12 HRS), AND FOUR CASTER WHEELS WITH FRONT LOCKS.

AOH 200 (B)

ANESTHESIA WORKSTATION

ANESTHESIA WORKSTATION – MOBILE COMPACT AND MOBILE ANESTHESIA WORKSTATION WITH A POWDER-COATED MS BODY, EQUIPPED WITH FLOWMETER, PRESSURE GAUGES, VAPORIZER MOUNT, AND STORAGE DRAWER. DESIGNED FOR EFFICIENT OPERATION WITH MULTIPLE OXYGEN CYLINDERS AND SMOOTH MOBILITY THROUGH HEAVY-DUTY CASTOR WHEELS.



AOH 200 (C)

ANESTHESIA WORKSTATION

**ANESTHESIA WORKSTATION – SS
(ADVANCED MODEL)
HIGH-QUALITY STAINLESS STEEL
ANESTHESIA WORKSTATION
EQUIPPED WITH FLOWMETER,
PRESSURE GAUGES, BREATHING
CIRCUIT, AND VAPORIZER MOUNT.
DESIGNED WITH A SPACIOUS WORK
TRAY, CYLINDER HOLDERS, AND
SMOOTH CASTOR WHEELS FOR
MOBILITY, OFFERING DURABILITY AND
EASY STERILIZATION FOR CRITICAL
CARE USE.**

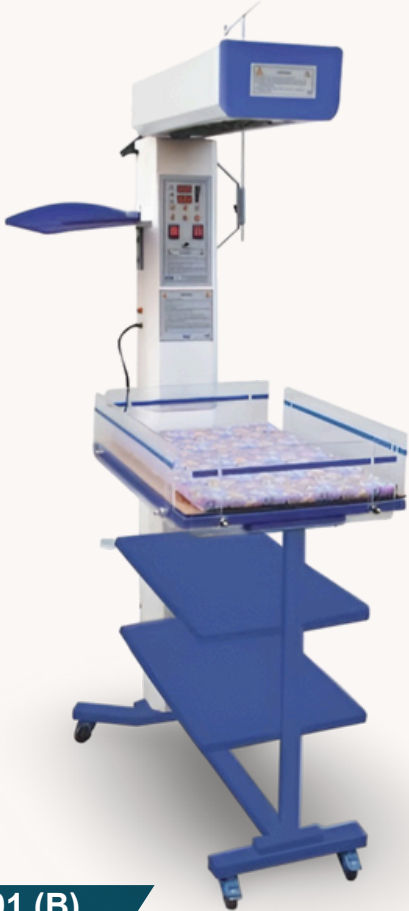


AOH 200 (D)

ANESTHESIA WORKSTATION

**ANESTHESIA WORKSTATION –
ADVANCED DELUXE MODEL
PREMIUM ANESTHESIA WORKSTATION
WITH POWDER-COATED MS BODY,
EQUIPPED WITH MULTIPLE
FLOWMETERS, PRESSURE GAUGES,
VAPORIZER MOUNT, AND EMERGENCY
OXYGEN OUTLET. FEATURES
INTEGRATED DRAWER, MULTIPLE
CYLINDER HOLDERS, AND SMOOTH
CASTOR WHEELS FOR EASY MOBILITY
—IDEAL FOR OT AND ICU
ENVIRONMENTS REQUIRING HIGH
EFFICIENCY AND RELIABILITY.**





AOH 201 (A)

BABY WARMER

INTENSIVE CARE WARMER (SINGLE PROBE)

A USER-FRIENDLY BABY WARMER EQUIPPED WITH A SINGLE SKIN PROBE, DESIGNED FOR FOCUSED HEATING AND EFFICIENT THERMAL REGULATION. FEATURES ELECTRONIC FEEDBACK CONTROL TO MAINTAIN A STABLE SKIN TEMPERATURE THROUGH ITS SKIN CONTROL MODE, AND A MANUAL MODE FOR BACKUP HEATING. IDEAL FOR NEONATAL CARE WITH A SIMPLE ONE-TOUCH CONTROL SYSTEM AND EVEN HEAT DISTRIBUTION ACROSS THE CRADLE.

AOH 201 (B)

BABY WARMER

INTENSIVE CARE SERVO WARMER

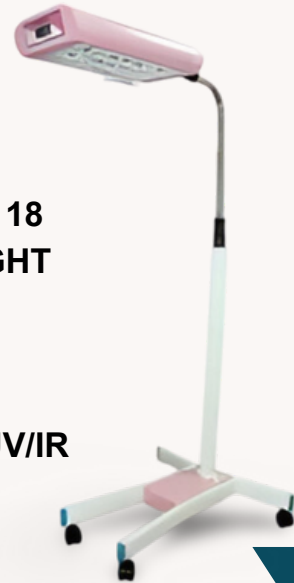
A DUAL PROBE INFANT WARMER WITH SKIN AND AIR CONTROL MODES, DESIGNED FOR PRECISE TEMPERATURE REGULATION. FEATURES INCLUDE LED LIGHT SOURCE, FOCUSED HEATING, ELECTRONIC SERVO CONTROL, AND MANUAL MODE FOR RELIABLE NEONATAL CARE. OFFERS PROGRAMMABLE SETTINGS, TEMPERATURE DISPLAY, AND OPTIONAL X-RAY PROVISION, BATTERY BACKUP, AND HEIGHT ADJUSTMENT. HEATER CAPACITY: 600W, POWER CONSUMPTION: 800W.



AOH 202 (A)

PHOTOTHERAPY UNIT

**KMS KM-US – UPPER SURFACE LED STAND
PORTABLE UPPER SURFACE PHOTOTHERAPY UNIT WITH 18 HIGH-POWER LEDs, DESIGNED TO PROVIDE UNIFORM LIGHT COVERAGE OVER THE CRADLE. FEATURES ADJUSTABLE HEIGHT, TILTABLE LED HEAD, AND SMOOTH CASTOR WHEELS FOR EASY MOBILITY. IDEAL FOR FLEXIBLE NEONATAL CARE WITH >45,000 HRS LAMP LIFE AND NO UV/IR EXPOSURE.**



AOH 202 (B)

PHOTOTHERAPY UNIT

**KMS KM-UST – SINGLE SURFACE LED PHOTOTHERAPY
INTEGRATED SINGLE SURFACE LED PHOTOTHERAPY SYSTEM WITH CRADLE AND UPPER LED LIGHT SOURCE. EQUIPPED WITH ADJUSTABLE HEIGHT, TILTABLE LED UNIT, AND SMOOTH MOBILITY FOR EFFECTIVE NEONATAL TREATMENT. COMPACT DESIGN SUPPORTS SAFE, UV-FREE AND IR-FREE EXPOSURE WITH LONG-LASTING ILLUMINATION.**

AOH 202 (C)

PHOTOTHERAPY UNIT

**KMS KM-DSP – DOUBLE SURFACE LED PHOTOTHERAPY
ADVANCED DOUBLE SURFACE LED PHOTOTHERAPY UNIT FEATURING UPPER AND LOWER LED LIGHT SOURCES FOR ENHANCED COVERAGE. DESIGNED FOR INTENSIVE NEONATAL JAUNDICE TREATMENT WITH DUAL-SIDE RADIANCE, HEIGHT ADJUSTMENT, TILTABLE HEAD, AND HIGH MANEUVERABILITY. BUILT WITH POWDER-COATED MS FRAME AND >45,000 HRS LED LIFE.**





AOH 203 (A)

COMEN VENTILATOR

**COMEN V-3 VENTILATOR
ADVANCED VENTILATOR WITH
12.1" TOUCHSCREEN, SUPPORTS
INVASIVE AND NON-INVASIVE
MODES. OFFERS MULTIPLE
VENTILATION SETTINGS
INCLUDING V-A/C, P-A/C, SIMV,
CPAP, PRVC, AND APRV.
SUITABLE FOR ALL PATIENT
CATEGORIES.**

AOH 204 (A)

DEFIBRILLATOR

**BI-PHASIC DEFIBRILLATOR KM-
2008 / KM-2009**

**ADVANCED DEFIBRILLATOR
WITH 7" TFT DISPLAY, MANUAL
& AED OPTIONS. SUPPORTS
SPO2, NIBP, ECG, ETCO2,
PACEMAKER. BIPHASIC ENERGY
FROM 2-200J, FAST CHARGING
(6 SEC), WITH ADULT/PEDIATRIC
PADDLES. RECHARGEABLE
BATTERY WITH 3-HOUR BACKUP.
OPTIONAL 360J MODEL
AVAILABLE.**



75

C- ARM

Ergonomic C-Arm Design

Fully counterbalanced C-arm can remain at any angle without repositioning.

Flat Panel Detector

9x9 Inch Csl Scintillator with Asi Photodiode High speed TFT technology

High Frequency Generator

Choice of Tube & Generator Stationery | Rotating

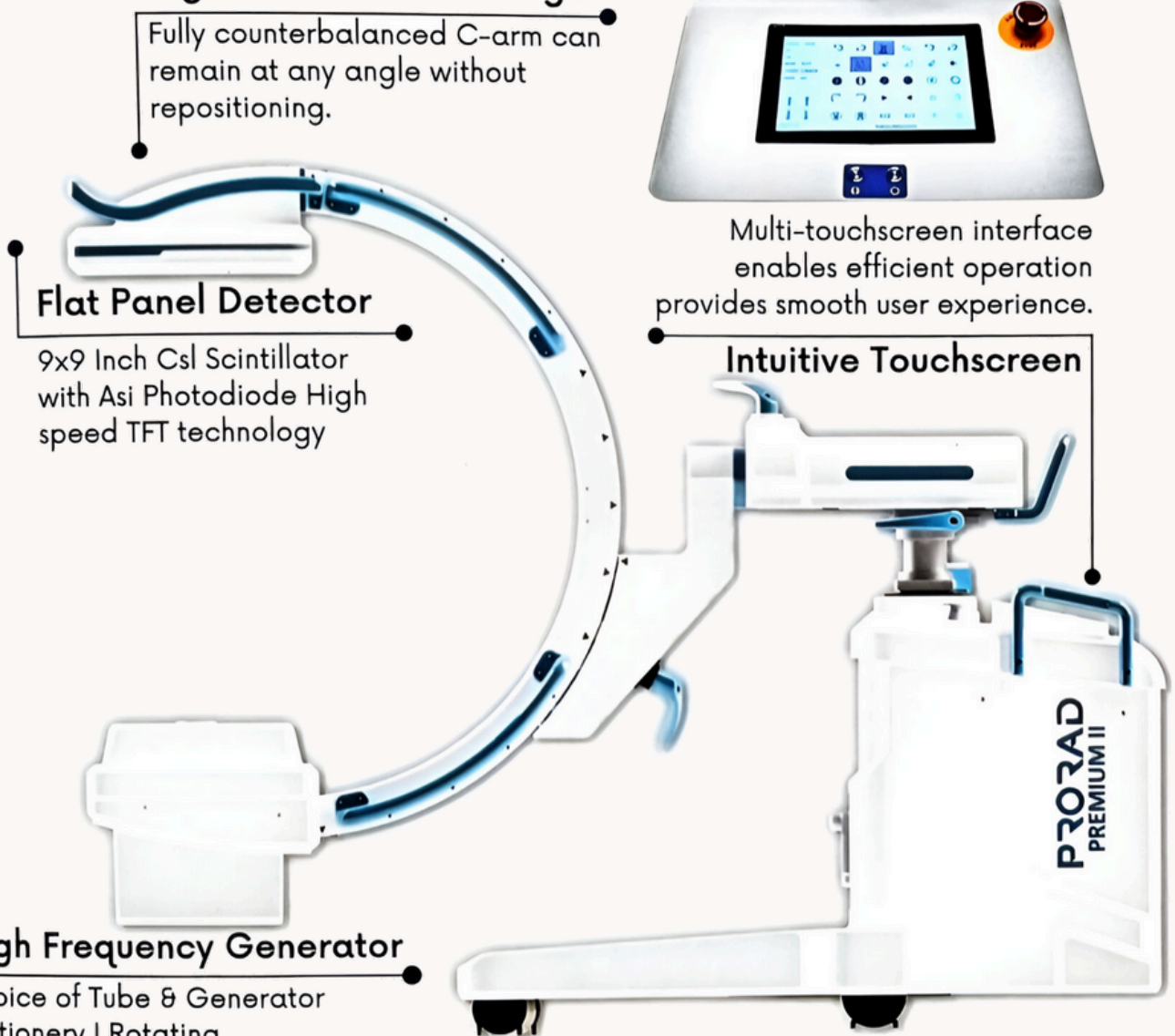


Multi-touchscreen interface enables efficient operation provides smooth user experience.

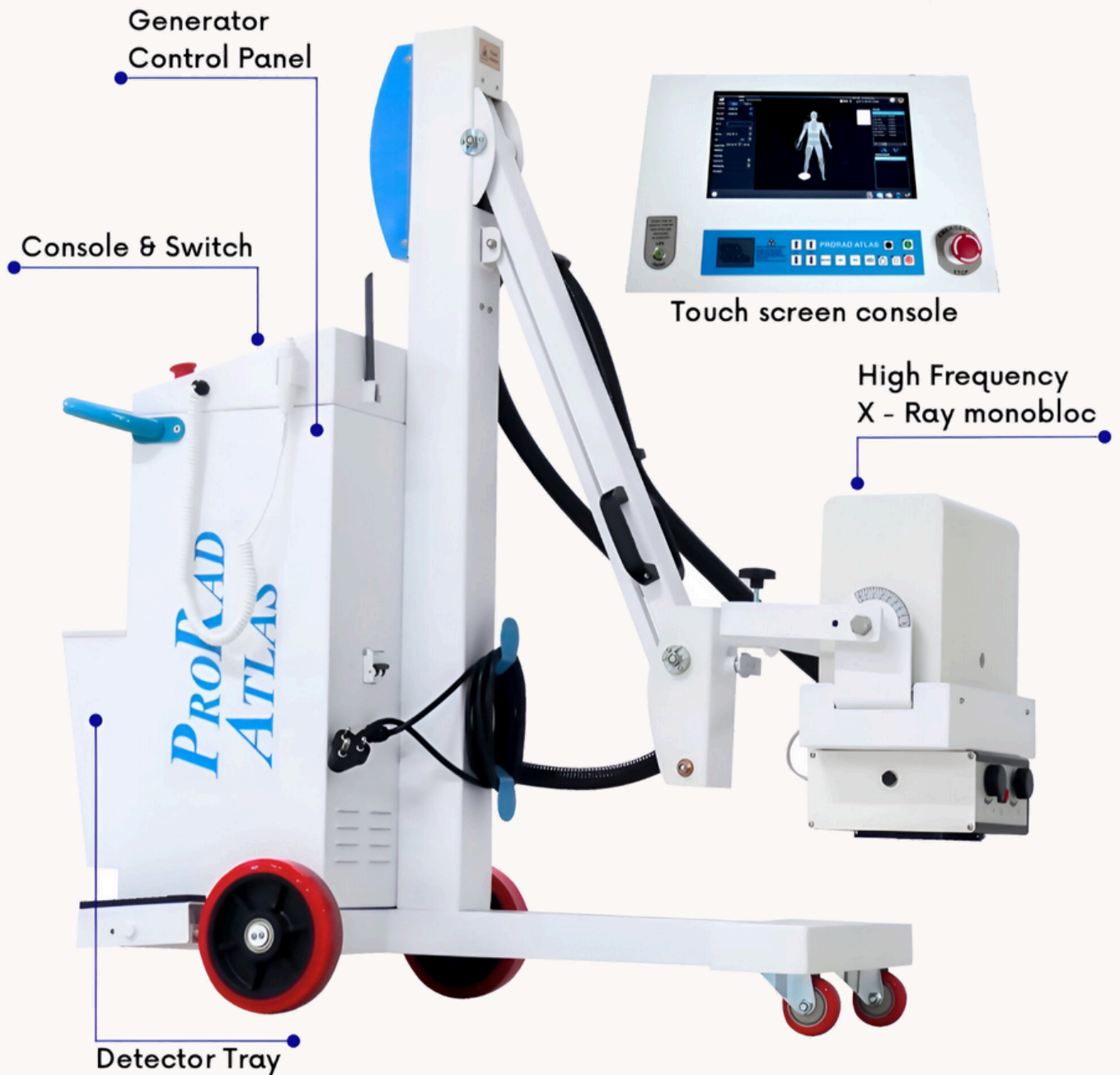
Intuitive Touchscreen

Exemplary Mechanics

Noiseless movement due to built in actuator & DC motor fully counter balanced for faster positioning & ease of use



PRORAD Mobile DR



Dimensions- 22"×48"×22"

AOH 207 (A)

SUCTION MACHINE

STAINLESS STEEL BODY, HEAVY-DUTY DUAL JAR SUCTION FOR HOSPITALS.



AOH 207 (B)

SUCTION MACHINE

POWDER-COATED BODY, DURABLE DUAL JAR SUCTION FOR MEDICAL USE.



AOH 207 (C)

SUCTION MACHINE

DUAL JAR SUCTION WITH PADEL, IDEAL FOR CLINICS.



AOH 207 (D)

SUCTION MACHINE

**K-LIFE PORTABLE SUCTION
MACHINE**

**MINI SUCTION MACHINE FOR HOME
AND SMALL PROCEDURES.**



AOH 208 (A)

OXYGEN CONCENTRATOR



**DOUBLE FLOW OXYGEN
CONCENTRATOR (JAY-5W / JAY-
10W)**

**HEAVY-DUTY OXYGEN
CONCENTRATOR WITH 0-5L/MIN
(JAY-5W) OR 0-10L/MIN (JAY-10W)
DUAL OUTPUT. DELIVERS 93%±3%
OXYGEN PURITY. FEATURES PSA
TECHNOLOGY, LARGE LCD, TIMER,
POWER FAILURE AND PRESSURE
ALARMS. NET WEIGHT: 25KG.**

AOH 208 (B)

OXYGEN CONCENTRATOR

OXY-5 (SINGLE FLOW)

**SILENT-RUNNING CONCENTRATOR
WITH 0-5L/MIN FLOWRATE AND 92%
OXYGEN PURITY. BUILT-IN OXYGEN
ANALYZER ENSURES
PERFORMANCE ACCURACY.
COMPACT DESIGN (365×375×600
MM), NET WEIGHT: 25KG. OPERATES
ON AC220V, 50/60HZ.**



AOH 208 (C)

**OXYGEN
CONCENTRATOR**

OXY-10 (SINGLE FLOW)

HIGH-CAPACITY CONCENTRATOR WITH 0-10L/MIN FLOWRATE, 92% PURITY, AND INBUILT OXYGEN ANALYZER. QUIET AND RELIABLE OPERATION. IDEAL FOR CONTINUOUS OXYGEN THERAPY. SIZE: 365×375×600 MM, NET WEIGHT: 25KG, POWER: AC220V, 50/60HZ.



AOH 208 (D)

**OXYGEN
CONCENTRATOR**



OXYMED OXYGEN CONCENTRATOR 10 LITRES (MODEL: MAOXY10 / AE-8-S) A HIGH-CAPACITY OXYGEN CONCENTRATOR OFFERING 1-10 LPM FLOW WITH 93% ±3% PURITY. IDEAL FOR CONTINUOUS 24-HOUR USE, FEATURING PSA TECHNOLOGY, DUAL FILTRATION (HEPA + BACTERIA FILTER), MULTIPLE SAFETY ALARMS (POWER FAILURE, LOW PURITY, VOLTAGE, ETC.), AND USER-FRIENDLY DESIGN. SUITABLE FOR BOTH ADULTS AND PEDIATRIC USE. POWER: 610VA | WEIGHT: 24 KG | WARRANTY: 2 YEARS / 12,000 HOURS.

80

AOH 209 (A)

BI-PAP



ADVANCED BI-PAP DEVICE WITH 3.5" LCD AND MULTIPLE MODES: CPAP, S, T, S/T, AVAPS. CONTINUOUS OPERATION WITH PRESSURE RANGE 4–30 CM H₂O. SUPPORTS SD CARD DATA STORAGE, QUIET OUTPUT (<30 DB), AND HIGH FLOW >20 LPM. WEIGHS <1.5 KG AND INCLUDES HEATED HUMIDIFIER OPTION.

AOH 210 (A)

C-PAP

COMPACT AUTO-CPAP MACHINE WITH INTEGRATED HUMIDIFIER AND 2.4" COLOR SCREEN. OPERATES IN AUTO CPAP AND CPAP MODES WITH CONTINUOUS OPERATION. FEATURES SD CARD DATA STORAGE, PRESSURE RANGE OF 4–20 HPA, AND ULTRA-QUIET PERFORMANCE (<28 DB). LIGHTWEIGHT AT 1.9 KG.



AOH 211 (A)

PATIENT MONITOR

PATIENT MONITOR (12.1")

MODULAR PATIENT MONITOR WITH 12.1" TOUCH SCREEN DISPLAY, DESIGNED FOR ADVANCED CLINICAL SETTINGS. MONITORS ECG, NIBP, SPO2, RESP, AND TEMP WITH REAL-TIME S-T SEGMENT AND ARRHYTHMIA ANALYSIS. OFFERS MODULAR UPGRADE OPTIONS WITH PRINTER, IBP, ETCO2, AND NELLCOR/MASIMO SPO2. INCLUDES MULTI-LEAD ECG DISPLAY, SD TREND STORAGE, AND UP TO 2 HOURS OF BACKUP VIA RECHARGEABLE BATTERY.



AOH 212 (A)

PULSE OXIMETER

TABLETOP PULSE OXIMETER WITH NIBP

COMPACT AND VERSATILE DEVICE FOR MONITORING NIBP, SPO2, AND PULSE RATE. FEATURES 7-SEGMENT LED DISPLAY FOR PRESSURE AND SPO2, AND A 2.4" COLOR LCD FOR WAVEFORMS AND TRENDS. OPERATES IN MANUAL AND AUTOMATIC MODES WITH ADJUSTABLE INTERVALS. NIBP RANGE: 10-270 MMHG, PULSE RATE: 25-250 BPM, SPO2 RANGE: 0-100%. STORES UP TO 2000 NIBP READINGS OR 10 HOURS OF SPO2 DATA. LIGHTWEIGHT (1.15 KG), SUITABLE FOR ADULT, PEDIATRIC, AND NEONATAL USE.



AOH 213 (A)

SYRINGE PUMP

SYRINGE PUMP



SYRINGE PUMP WITH 3 INFUSION MODES: SPEED, TIME-VOLUME, AND DOSAGE WEIGHT. SUPPORTS MULTIPLE SYRINGE SIZES (2-60ML) WITH AUTO KVO AND LAST SETTING MEMORY. AUTO-CALIBRATION FOR SYRINGE ACCURACY. FLOW RATE UP TO 1500 ML/H. BATTERY BACKUP: 4 HRS. WEIGHT: 2.2 KG.

AOH 214 (A)

INFUSION PUMP

INFUSION PUMP

SMART INFUSION PUMP WITH HD LCD DISPLAY AND DUAL MODE (ML/H & DROPS/MIN). SPEED RANGE: 1-1200 ML/H, VOLUME UP TO 9999.9 ML. $\pm 5\%$ ACCURACY WITH 0.1 ML INCREMENT. FEATURES AUTO KVO, PURGE FUNCTION, OCCLUSION LEVELS, AND 4-HOUR BATTERY BACKUP. WEIGHT: 1.8 KG.



AOH 215 (A)

FETAL MONITOR

FETAL MONITOR

10.2" TOUCH SCREEN FETAL MONITOR WITH ADVANCED DSP TECHNOLOGY FOR ACCURATE FHR, TOCO & FM TRACKING. SUPPORTS TWIN MONITORING, WAVEFORM REVIEW, AND AUTO INTERPRETATION. FEATURES WATERPROOF PROBE, THERMAL PRINTER, AND OPTIONAL PC CONNECTIVITY. POWER: <20W, WEIGHT: 3.2 KG.



AOH 216 (A)

VIDEO LARYNGOSCOPE

VIDEO LARYNGOSCOPE

PORTABLE LARYNGOSCOPE WITH 3.5" LCD DISPLAY AND ROTATABLE SCREEN. EQUIPPED WITH A 2.0 MP HIGH-RESOLUTION CAMERA FOR CLEAR AIRWAY VISUALIZATION. USB CHARGER WITH 8-HOUR LITHIUM BATTERY BACKUP. LIGHTWEIGHT (350G) AND SUPPORTS REUSABLE OR DISPOSABLE BLADES (OPTIONAL).



AOH 217 (A)

AED

AUTOMATED EXTERNAL DEFIBRILLATOR (AED)

FULLY AUTOMATIC AED WITH BIPHASIC TRUNCATED EXPONENTIAL WAVEFORM. DELIVERS 150J FOR ADULTS AND 50J FOR PEDIATRIC USE. FEATURES CLEAR VOICE PROMPTS, AED STATUS LED, AND CPR PACING SUPPORT. LIGHTWEIGHT AND USER-FRIENDLY WITH "ANALYZING" AND "SHOCK READY" INDICATORS. COMES WITH A NEW BATTERY (AT 25°C) FOR OPTIMAL READINESS.



AOH 218 (A)

ECG

12 CHANNEL ECG TOUCH SCREEN

ADVANCED 12-CHANNEL ECG WITH 10.2" LCD TOUCH SCREEN. FEATURES REAL-TIME WAVEFORM DISPLAY, AUTO-MEASUREMENT, AUTO-INTERPRETATION, USB & SD CARD SUPPORT, AND PC CONNECTIVITY. INCLUDES MULTIPLE PRINT MODES AND LITHIUM BATTERY BACKUP. PAPER SIZE: A4 (210MM × 20M).



AOH 218 (B)

ECG

3 CHANNEL ECG – 5.7" TOUCH SCREEN

COMPACT 3-CHANNEL ECG MACHINE WITH 5.7" TOUCH SCREEN. OFFERS WAVEFORM PLAYBACK, AUTO-INTERPRETATION, AND SD CARD DATA STORAGE (OPTIONAL). IDEAL FOR ROUTINE CARDIAC DIAGNOSTICS WITH USER-FRIENDLY INTERFACE AND CLEAR DISPLAY.



AOH 218 (C)

ECG

6 CHANNEL ECG – 5.7" LCD

MID-RANGE ECG WITH 6-CHANNEL OUTPUT AND 5.7" LCD SCREEN. SUPPORTS REAL-TIME DATA ACQUISITION, AUTO-ANALYSIS, MULTIPLE REPORT FORMATS, AND PC CONNECTIVITY. BUILT FOR EFFICIENT AND ACCURATE CARDIAC ASSESSMENT.



AOH 219 (A)

CAUTERY MACHINE

**KMS DIGITAL CAUTERY MACHINE – 400W
HIGH-FREQUENCY ELECTROSURGICAL
UNIT WITH DIGITAL CONTROL AND 400W
MAXIMUM OUTPUT. OFFERS CUTTING,
COAGULATION, AND BLEND MODES WITH
PRECISE POWER ADJUSTMENT.
DESIGNED FOR GENERAL SURGERY,
GYNECOLOGY, ORTHOPEDICS, AND ENT.
FEATURES MONOPOLAR AND BIPOLAR
OUTPUT, SAFETY ALARMS, AND
FOOTSWITCH OPERATION. SUITABLE
FOR CONTINUOUS AND PULSE USE WITH
STABLE PERFORMANCE.**



AOH 219 (B)

CAUTERY MACHINE

**KMS ANALOG CAUTERY MACHINE –
300W**

**RELIABLE ELECTROSURGICAL UNIT
WITH ANALOG CONTROL AND 300W
POWER OUTPUT. SUPPORTS
MONOPOLAR AND BIPOLAR MODES
FOR CUTTING AND COAGULATION.
EASY ROTARY KNOB ADJUSTMENT
WITH INDICATOR DISPLAY. SUITABLE
FOR GENERAL SURGICAL
APPLICATIONS WITH STABLE
PERFORMANCE AND SAFETY
PROTECTION.**



AUTOCLAVE



PORTABLE AUTOCLAVE (ELECTRIC / NON-ELECTRIC)

ALUMINIUM MIRROR-FINISH AUTOCLAVE WITH SEAMLESS CONSTRUCTION. FEATURES PRESSURE GAUGE, SAFETY & STEAM RELEASE VALVES, VACUUM RELEASE, RUBBER GASKET, AND INNER TRIPOD STAND. AVAILABLE IN ELECTRIC AND NON-ELECTRIC OPTIONS. LIGHTWEIGHT, ECONOMICAL, AND EASY TO MAINTAIN.

AVAILABLE SIZES: 12"X12", 12"X15"

AUTOCLAVE

AUTOCLAVE 12X22 DOUBLE DRUM (VERTICAL STAINLESS STEEL NUT LOCKING)

DOUBLE-WALL VERTICAL AUTOCLAVE MADE OF STAINLESS STEEL WITH LEAK-PROOF INNER CHAMBER. EQUIPPED WITH PRESSURE GAUGE, SAFETY VALVES, STEAM RELEASE, WATER DRAIN VALVE, AND RUBBER GASKET. INCLUDES TRIPOD STAND AND MILD STEEL LEGS. OPERATES AT 5-20 PSI. AVAILABLE SIZES: 12"X22", 16"X24"



AOH 220 (C)

AUTOCLAVE



VERTICAL HIGH PRESSURE AUTOCLAVE WITH RADIAL LOCKING SYSTEM MADE FROM 304 STAINLESS STEEL. EQUIPPED WITH DIGITAL TIMER, TEMPERATURE DISPLAY, LOW WATER CUT, PADDLE LIFTING, ALARM SYSTEM, AND WATER LEVEL INDICATOR. SUITABLE FOR STERILIZING SURGICAL INSTRUMENTS, DRESSINGS, RUBBER, AND PLASTIC MATERIALS UNDER ADJUSTABLE STEAM PRESSURE OF 15-20 PSI.

AOH 220 (D)

AUTOCLAVE



HIGH PRESSURE HORIZONTAL AUTOCLAVE MADE FROM 304 STAINLESS STEEL WITH CYLINDRICAL DESIGN. FEATURES DIGITAL TIMER, TEMPERATURE DISPLAY, RADIAL PRESSURE LOCKING SYSTEM, WATER LEVEL INDICATOR, PADDLE LIFTING, LOW WATER CUT, AND OPTIONAL BACTERIAL FILTER. IDEAL FOR BULK STERILIZATION OF SURGICAL INSTRUMENTS AND MEDICAL MATERIALS, OPERATED ON 220V SINGLE-PHASE, 50HZ AC SUPPLY.

88

AOH 221

Dressing Drums

JOINTLESS STAINLESS STEEL CONSTRUCTION WITH BURR-FREE FINISH, SLIDING LOCK, AND DOMED LID. DURABLE AND IDEAL FOR STORING STERILE ITEMS.

SIZES AVAILABLE:

A 9"X9", B 11"X9", C 12"X15", D 6"X6"



AOH 222

FOGGER MACHINE

DURABLE ULV FOGGER WITH 3L OR 5L CHEMICAL-RESISTANT TANK. PRODUCES FINE DISINFECTANT MIST FOR EFFECTIVE COVERAGE IN CLINICS, HOSPITALS, AND LABS. COMPACT, EASY TO OPERATE, AND IDEAL FOR INFECTION CONTROL.

AOH 223

FUMIGATOR MACHINE

STAINLESS STEEL FUMIGATOR MACHINE WITH 1.5L OR 5L CAPACITY. PRODUCES DENSE CHEMICAL FOG FOR EFFECTIVE DISINFECTION OF HOSPITALS, LABS, AND OPERATION THEATERS. COMPACT, DURABLE, AND EASY TO USE.



AOH 224 (A)

O.T
LIGHT



IMC 5+5 LED SURGICAL LIGHT

**INTENSITY: 1,40,000 + 1,40,000
LUX**

LEDS: 95 + 95

DIAMETER: 500 MM × 2

COLOR TEMP: 4000–5000 K

CRI: 93

LED LIFE: >50,000 HRS

CONTROL: TOUCH PANEL

POWER: 220V, 50HZ

BACKUP: OPTIONAL

AOH 224 (B)

O.T
LIGHT

IMC 5+4 LED SURGICAL LIGHT

**INTENSITY: 1,40,000 + 1,00,000
LUX**

LEDS: 96 + 76

DIAMETER: 500 MM × 2

COLOR TEMP: 4000–5000 K

CRI: 93

LED LIFE: >50,000 HRS

CONTROL: TOUCH PANEL

POWER: 220V, 50HZ

BACKUP: OPTIONAL



AOH 224 (C)

**O.T
LIGHT**

IMC 5+3 LED SURGICAL LIGHT

INTENSITY: 80,000 + 1,40,000 LUX

LEDS: 57 + 95

DIAMETER: 500 MM × 2

COLOR TEMP: 4000–5000 K

CRI: 93

LED LIFE: >50,000 HRS

CONTROL: TOUCH PANEL

POWER: 220V, 50HZ

BACKUP: OPTIONAL



AOH 224 (D)

**O.T
LIGHT**

IMC 4+4 LED SURGICAL LIGHT (MODEL 1)

INTENSITY: 1,30,000 LUX

LEDS: 84

DIAMETER: 600 MM

COLOR TEMP: 4000–6000 K

CRI: 93

LED LIFE: >50,000 HRS

CONTROL: TOUCH PANEL

POWER: 220V, 50HZ

BACKUP: OPTIONAL



AOH 224 (E)

O.T
LIGHT



**IMC 4+4 LED SURGICAL LIGHT
(MODEL 2)**

**INTENSITY: 1,25,000 × 2 LUX
SPOT DIAMETER: 100–150 MM
DEPTH ILLUMINATION: 10–15 CM
COLOR TEMP: 3800–5200 K
CRI: 91
FOCUSING: MANUAL**

AOH 224 (F)

O.T
LIGHT

IMC 4 – LED SURGICAL LIGHT:

HIGH-QUALITY LED SURGICAL LIGHT FEATURING 76 LEDS, 1,25,000 LUX INTENSITY, AND A STERILIZABLE HANDLE. OFFERS MEMORY FUNCTION, EXCELLENT HEAT VENTILATION, AND IS BUILT WITH DURABLE, FIRE-RESISTANT POLYMER. SUITABLE FOR PRECISE SURGICAL ILLUMINATION WITH MANUAL FOCUSING AND ADJUSTABLE INTENSITY CONTROL.



AOH 224 (G)

O.T LIGHT

IMC 4+4

DUAL DOME LED SURGICAL LIGHT WITH HIGH BRIGHTNESS (1,25,000 X 2 LUX) AND STERILIZABLE HANDLES. PROVIDES DEEP ILLUMINATION AND COLOR ACCURACY FOR COMPLEX PROCEDURES.



AOH 224 (H)

O.T LIGHT

IMC FIBER CEILING LIGHT

CEILING-MOUNTED FIBER OPTIC SURGICAL LIGHT DESIGNED FOR SHADOWLESS, FOCUSED ILLUMINATION. IDEAL FOR DEEP CAVITY OPERATIONS WITH MINIMAL HEAT EMISSION AND CLEAR VISIBILITY.



IMC FIBER
CEILING LIGHT

AOH 224 (I)

O.T LIGHT

IMC - 4

WALL-MOUNTED LED SURGICAL LIGHT WITH A FOUR-REFLECTOR DOME. OFFERS EFFICIENT ILLUMINATION, HEAT MANAGEMENT, AND IS SUITABLE FOR VARIOUS SURGICAL PROCEDURES.



IMC - 4

AOH 224 (J)

O.T LIGHT

IMC ALUMINIUM SINGLE DOME

WALL-MOUNTED ALUMINUM SURGICAL LIGHT WITH A CLASSIC SINGLE DOME DESIGN. DURABLE, HEAT-RESISTANT, AND SUITABLE FOR CLINICS AND MINOR SURGICAL SETTINGS.



IMC ALUMINIUM
SINGLE DOME

AOH 224 (K)

O.T LIGHT

IMC MOBILE LIGHT-4

MOBILE LED SURGICAL LIGHT WITH A FOUR-REFLECTOR DOME. PROVIDES ENHANCED BRIGHTNESS AND MANEUVERABILITY FOR PROCEDURES REQUIRING MOBILITY AND RELIABLE ILLUMINATION.



AOH 224 (L)

O.T LIGHT

IMC MOBILE LIGHT

COMPACT AND MOBILE SURGICAL LIGHT WITH A SINGLE DOME. DESIGNED FOR FLEXIBILITY AND PORTABILITY IN MINOR PROCEDURES OR AS A SECONDARY LIGHTING SOURCE.



IMC MOBILE
LIGHT

AOH 225

EXAMINATION LIGHT

MOBILE LED EXAMINATION LIGHT AVAILABLE IN 7, 12, AND 21 LED VARIANTS, OFFERING BRIGHT, SHADOW-FREE ILLUMINATION WITH A FLEXIBLE ARM AND MOBILE BASE—IDEAL FOR CLINICAL USE AND MINOR PROCEDURES.



AOH 226 (A)

STRETCHER

FOLDING STRETCHER MADE OF DURABLE TWO-FOLD ALUMINIUM FRAME WITH HEAVY-DUTY CANVAS CLOTH. LIGHTWEIGHT, PORTABLE DESIGN WITH CARRYING BAG INCLUDED—IDEAL FOR EMERGENCY RESCUE, PATIENT TRANSPORT, AND FIELD USE.



AOH 226 (B)

STRETCHER

FOLDING STRETCHER MADE OF DURABLE TWO-FOLD ALUMINIUM FRAME WITH HEAVY-DUTY CANVAS CLOTH. LIGHTWEIGHT, PORTABLE DESIGN—IDEAL FOR EMERGENCY RESCUE, PATIENT TRANSPORT, AND FIELD USE.



AOH 227 (A)

WHEELCHAIR



RYDER-1 ALUMINIUM FOLDING WHEELCHAIR
LIGHTWEIGHT AND DURABLE ALUMINIUM WHEELCHAIR DESIGNED FOR EASY MOBILITY AND COMFORT. FEATURES A FOLDABLE FRAME, FIXED ARMRESTS, FOLDABLE FOOTRESTS, AND REAR HAND BRAKES FOR ADDED SAFETY. COMPACT DESIGN ENSURES EASY TRANSPORT AND STORAGE, MAKING IT IDEAL FOR INDOOR AND OUTDOOR USE.

AOH 227 (B)

WHEELCHAIR

RYDER TRAVELLING WHEELCHAIR
ULTRA-LIGHTWEIGHT AND FOLDABLE ALUMINIUM TRAVEL WHEELCHAIR WITH COMPACT DESIGN FOR EASY PORTABILITY. FEATURES DURABLE PLAID FABRIC SEAT, FIXED ARMRESTS, REAR HAND BRAKES, AND SOLID WHEELS —PERFECT FOR TRAVEL, AIRPORT USE, AND SHORT-DISTANCE MOBILITY.



96

AOH 227 (C)

WHEELCHAIR

COMMODE WHEELCHAIR U-CUT (POWDER COATED)

A VERSATILE AND DURABLE MOBILITY AID COMBINING THE FEATURES OF A STANDARD WHEELCHAIR WITH A BUILT-IN COMMODE. DESIGNED WITH A U-CUT SEAT FOR HYGIENE ACCESS AND EASE OF USE. FEATURES INCLUDE A POWDER-COATED STEEL FRAME, FLIP-UP FOOTRESTS, FIXED ARMRESTS, AND A REMOVABLE COMMODE BUCKET. IDEAL FOR PATIENTS REQUIRING ASSISTANCE WITH TOILETING AND MOBILITY, BOTH AT HOME AND IN HEALTHCARE SETTINGS.



AOH 227 (D)

WHEELCHAIR

FOLDING WHEELCHAIR (POWDER COATED FRAME)

A DURABLE AND USER-FRIENDLY MANUAL WHEELCHAIR DESIGNED FOR DAILY MOBILITY SUPPORT. IT FEATURES A STRONG POWDER-COATED MS FRAME FOR LONG-LASTING PERFORMANCE, FOLDABLE DESIGN FOR EASY TRANSPORT AND STORAGE, COMFORTABLE PADDED SEAT AND BACKREST, FIXED ARMRESTS, FLIP-UP FOOTRESTS, AND SOLID REAR AND FRONT WHEELS FOR STABILITY. IDEAL FOR BOTH INDOOR AND OUTDOOR USE IN HOSPITALS, HOMES, OR WHILE TRAVELING.



97

WHEELCHAIR

**FIXED WHEELCHAIR –
STAINLESS STEEL:**

**STURDY WHEELCHAIR WITH A
STAINLESS STEEL FRAME,
PADDED SEAT AND BACKREST,
FIXED ARMRESTS AND
FOOTRESTS, AND SOLID
WHEELS FOR SMOOTH INDOOR
MOBILITY. IDEAL FOR
HOSPITALS AND HOME CARE.**



AOH 227 (F)

WHEELCHAIR

**FIXED WHEELCHAIR – MS
POWDER COATED:**

**DURABLE MILD STEEL (MS)
POWDER-COATED FRAME
WHEELCHAIR WITH FIXED
ARMRESTS AND FOOTRESTS,
VINYL SEAT AND BACKREST,
AND SOLID WHEELS FOR
SMOOTH MOVEMENT.
ECONOMICAL AND IDEAL FOR
HOSPITALS AND CLINICS.**





 *A One Hospicare*TM

Trade your Expectation for Appreciation and the World changes Instantly



SURGICAL GROUP

Mfgd. & Mktd. By:

A ONE HOSPICARETM

**353/1/11, Nayta Mundla, New R.T.O. Road, Ahead.
Shubh City, Palda, Indore, M.P. - 452020**

aonehospicare.in